

The Magnifier

for Windows

Area and Full Screen Magnifier

Version 1.50 Release 5

User's Guide

The Magnifier: for Windows; Area and Full Screen Magnifier; Version 1.50 Release 5; User's Guide

IMG Real World Press

179 Niblick Road #454
Paso Robles, CA 93446
1-800-889-0987 (US & Canada)
+1-818-701-1579
+1-818-936-0200 (fax)

Website: <http://www.imgpresents.com>

To report errors, please send a note to ts@imgpresents.com

IMG Real World Press is a division of Innovation Management Group, Inc.

The Magnifier, Version 1.50 Release 5, 9/17/2012

Copyright © 1997-2012 by Innovation Management Group, Inc.

Production/Editing/Composition/Indexing/Publishing: IMG Real World Press

Notice of Rights

All Rights Reserved. No part of this book may be reproduced or transmitted in any form by any means, electronic, mechanical, photocopying, recording, or otherwise, without the prior written permission of the publisher. For information on obtaining permission for reprints, excerpts, or other uses, please contact ts@imgpresents.com

Trademarks

My-T-Mouse®, My-T-Pen®, My-T-Touch® and My-T-Soft® are registered trademarks of Innovation Management Group, Inc.

Any other product name, service, or company identified within the book is used for informational or editorial purposes only, and with no intention of infringement of any trademark. No such use is intended to convey endorsement or other affiliation with this book.

Notice of liability

The information in this book is distributed on an "As is" basis, without warranty. While every precaution has been taken in the preparation of this book, IMG Real World Press shall not have any liability to any person or entity with respect to any loss or damage caused or alleged to be caused directly or indirectly by any information contained in this book or the product(s) described. The publisher takes no responsibility for any errors or omissions.

ISBN 978-0-557-88454-4

Table of Contents

Part I. Getting Started.....ix

1. Quick Start	1
2. Getting Started	9
The Magnifier User's Guide.....	9
Using this Guide	12
What is The Magnifier?	14
Why do I need The Magnifier?	18
Features	20
What You Need	23
Installing / Un-Installing The Magnifier.....	24
Starting The Magnifier.....	30
Licensing Information.....	32
License Manager.....	35
Standard Settings	51
Commonly Asked Questions ..	51

Customer Support	58
Product Catalog.....	61
Part II. Using The Magnifier.....	69
3. Common Configurations.....	71
The Magnifier Common	
Configurations Overview	71
The Magnifier Basic Operation	
Notes	72
The Magnifier Toolbar	77
The Magnifier Complete List of	
Shortcut Keys.....	83
The Magnifier Shortcut Keys by	
Function	110
The Magnifier Full Screen	
Operation - Common	
Configurations.....	117
The Magnifier Color Inversion	
Operation - Common	

Configurations.....	119
The Magnifier Return to Defaults	
- Common Configurations	122
The Magnifier tracks Mouse	
Cursor - Common	
Configurations.....	124
The Magnifier Starts with	
Windows - Common	
Configurations.....	126
4. Windowed Operation	131
The Magnifier Windowed	
Operation Overview	131
Magnification	132
Full Screen	139
The Magnifier Follows Cursor	
140	
Invert Colors.....	144
Position	145

Set Position	149
Cursor Options	156
Advanced	161
Help.....	174
Exit & Save	176
5. Full Screen Operation	179
The Magnifier Full Screen	
Operation Overview	179
Magnification	183
Full Screen	189
Invert Colors.....	190
Cursor Options	191
Advanced	198
Full Screen Options.....	209
Help.....	212
Exit & Save	215
6. Magnifier Menu	217

The Magnifier Menu Overview	217
Magnifier Menu - Main Menu	219
Magnifier Menu - Magnification Menu	223
Magnifier Menu - Position Menu	225
Magnifier Menu - Set Position Menu	227
Magnifier Menu - Cursor Options Menu.....	229
Magnifier Menu - Advanced Menu	230
Magnifier Menu - Full Screen Options Menu.....	232
Magnifier Menu - Help Menu	233

Part III. The Magnifier Technical

Documentation	237
7. Advanced User Notes.....	241
Advanced User Notes & Information	241
Final Release Notes.....	243
Important User Notes.....	244
Technical Notes.....	246
The Magnifier Files & File Notes & Installation Information	247
Installation Information	252
The Magnifier Initialization File Documentation (MAGNIFY.INI)	257
Alternate Magnification In Vista	285
Application Notes	289
Windows Developers	291
About this product.....	294

Customer Suggestions.....	295
Index.....	299

List of Tables

3-1. Keyboard Shortcut Quick Reference	84
---	----

x

Part I. Getting Started

**General
information
about this guide,
the product,
installation, and
getting started**

(how to get The Magnifier running).

Chapter 1 - Quick Start contains details on the fastest way to install & begin using The Magnifier

Chapter 2 - Getting Started has more information about this guide, The Magnifier features, Installing / Un-Installing, Licensing Information, Standard Settings, using The Magnifier Setup, Commonly Asked Questions, and information about Customer Support.

Chapter 1. Quick Start

Install The Magnifier

There are various ways to obtain IMG software, including (but not limited to):

- Web based / Internet download from IMG's web site (<http://www.imgpresents.com/demo.htm>)
- Shipped CD / DVD physical media
- IMG Product Disc
- Download ISO image file and burn IMG Product Disc CD / DVD

Chapter 1. Quick Start

- USB Flash Drive (pre-installed or installed from USB media web download)
- Single file install (from local network / internet / other media)
- IMG on-line account

Note: IMG Software is built by product and major version with minor releases. There is only 1 unique build, but can be packaged / delivered / obtained in various ways. When unlicensed, the software acts as a demonstration / evaluation copy, and operation will be limited in length or run-time or capabilities. Once licensed

(typically via License Key and Serial Number, or OEM / Company-wide / Enterprise licensing), the software will operate with no limitations.

Recommendation: The quickest and easiest method for obtaining IMG software is to download the current version from IMG's web site (<http://www.imgpresents.com/demo.htm>). Download, then run the file to install. Test, review, play with, and verify the software meets your needs and requirements. When ready to purchase, go to

Chapter 1. Quick Start

the IMG License Manager, and click on the "Purchase License Now" button. If working on a machine without internet access, use the Standard or MSI single file download, or use a Product Disc option. Separately, purchase the license for the product directly on the website - once you have your License Key and Serial Number, you can install and license the software.

The following outlines a standard retail Product Disc based install. For other options, refer to notes and details available at the source. In

general, the approach is to install the software, then license the software.

The Product Disc Installation

Assistant provides an easy way to accomplish these two tasks.

- In Windows, insert the CD or DVD - the AutoRun feature will load the Installation Assistant - you may Install a licensed product , Install other product demos, or view Release Information. **If you have a Certificate of Authenticity, enter your License Key, Serial Number, and Name to Install and automatically License.**
- If AutoRun is not enabled:

Chapter 1. Quick Start

- In Windows, Click on the Start Button
- Select Run
- Select D:SETUP, or type D:SETUP (or E:SETUP if CD/DVD drive E:, etc.)
- Press (ENTER) or click on OK
- In Windows Vista, you may not have the Run Option - select Computer, your CD/DVD drive, and open Setup
- Answer the questions and follow the instructions on your screen

Note: You may also Un-Install The Magnifier by running

SETUP.EXE After The Magnifier has been properly installed. (The Magnifier Setup will ask you if you wish to Un-Install.) This has been provided as a convenience to the user. It is recommended that you use the Control Panel | Add/Remove Programs Icon to remove The Magnifier.

Start The Magnifier

Click on the Start Button, and open the Start Menu.

Select (All) Programs, then Select The Magnifier. The Magnifier menu will have selections corresponding to

Chapter 1. Quick Start

the icons in the group. Select The Magnifier to begin operation.

The Magnifier will automatically run after install. You will see a window in the center of your screen with the default settings. You can right-click on The Magnifier to open The Magnifier menu. You may also click on the small icon in the tray (near the clock) for The Magnifier menu. You can use the keyboard shortcut **Alt-K** to see the list of keyboard shortcuts and get access to The Magnifier help files. Refer to the on-line help, and the User's guide for features and capabilities of The Magnifier.

Chapter 2.

Getting Started

The Magnifier User's Guide

Version 1.50 Release 5

9/17/2012

A Utility for Windows

Information in this document is subject to change without notice and does not represent a commitment on the part of Innovation Management

Chapter 2. Getting Started

Group, Inc. The software described in this document is furnished under a license agreement or nondisclosure agreement. The software and documentation may be used or copied only in accordance with the terms of this agreement. It is against the law to copy the software on any medium except as specifically allowed in the license or nondisclosure agreement. The purchaser may be allowed to make a back-up copy. No part of this manual or guide may be reproduced or transmitted in any form or by any means, electronic or mechanical, including photocopying, recording, or information storage and retrieval systems, for any purpose other than

Chapter 2. Getting Started

the purchasers personal use, without the express written permission of Innovation Management Group, Inc.

This manual and product represent over 15 years of on-going development, testing, and support. Licensed users of the software are the most important aspect of the entire process that brings this manual and product into existence. Please be respectful of all parties involved.

Trademarks:

Microsoft Windows is a trademark of Microsoft Corporation.

My-T-Mouse[®], My-T-Pen[®], My-T-Touch[®] and My-T-Soft[®] are registered trademarks of Innovation

Chapter 2. Getting Started

Management Group, Inc.

Copyrights

The Magnifier Copyright ©
1997-2012 Innovation Management
Group, Inc.

The Magnifier User's Guide
Copyright © 1997-2012 Innovation
Management Group, Inc.

All Rights Reserved. Software
Subject to Restricted Rights.

Using this Guide

This guide is a comprehensive
collection of details, notes, and

information about The Magnifier. Portions are incorporated within the product itself, and it is also available in various forms (e.g. printed, on-line, PDF, etc.).

Important User Information

This guide is for users who are familiar with Windows, its basic concepts, and how to operate within Windows. If you are not, the information you may need to fully utilize The Magnifier and this guide may be limited. You may wish to review Windows help, tutorials, and other available information on using and operating Windows before continuing using this guide.

Chapter 2. Getting Started

Conventions used within this guide

Note: Notes and other additional information will be indicated in this way

Warning

Special and other important details to pay close attention to will appear this way

What is The

Magnifier?

The Magnifier is an easy to operate utility that magnifies the screen area below the current position of the mouse cursor (pointer) within Windows. New features include the ability to track the text caret (text cursor), follow dialogs and keyboard focus, and the often requested full screen operation (with support for multiple monitors (if available)). Quick & easy keyboard shortcuts allow access to different magnification factors; to toggle colors; to toggle visibility; to toggle full-screen vs. window mode operation; and to access many other features &

Chapter 2. Getting Started

capabilities. The Magnifier allows individuals to clearly see details that otherwise may be difficult to see due to screen sizing, differing resolutions, graphic detail, or vision impairment.

Note: The Magnifier started as a panel on IMG's My-T-Mouse[®], and became a stand-alone product in 1997. In 2007, to support new magnification interfaces available in Windows Vista, The Magnifier was updated to provide even more capabilities, and to incorporate user suggestions.

Chapter 2. Getting Started

Intended uses: The Magnifier provides all types of useful tools and capabilities for individuals with visual impairments, graphic artists, and general computer users who may need a quick & easy way to magnify some or all of their display. The whole design, intent, and result of the engineering decisions behind what The Magnifier is, and its purpose, has been focused on creating an affordable magnifier for everyone. For individuals with specific requirements, who need screen reading capability, or who find the limitations of this product problematic, then

Chapter 2. Getting Started

this product is probably not for you. There are numerous other screen magnification products available that may provide alternate, more advanced, or additional capabilities beyond what The Magnifier provides. Note that some of these products are significantly more expensive, and any comparison should be made in terms of utility and cost-basis value. When it comes to usability, affordability, and value, The Magnifier provides an incredible solution that results in many satisfied customers.

Why do I need The Magnifier?

The Magnifier is easy and fun to use, provides full screen magnification, along with numerous other user-requested features. Just point, type, or move around with your keyboard and it automatically magnifies. If you spend a lot of time staring at the screen, want to operate farther from the screen, have any visual impairment, or want to relax while using your computer, The Magnifier provides everything you need. The Magnifier contains numerous user-requested options, has

Chapter 2. Getting Started

been enhanced to provide simple & straightforward magnification capabilities, and includes simple, sophisticated, and advanced tools for all types of users. There is also a set of integration tools for developers.

Features

- Up to 40x Magnifier for ALL windows applications
- Full screen operation (supports multiple monitors)
- Resizable window(s) for complete flexibility.

Chapter 2. Getting Started

- Up to 7 windowed Magnifiers can be running at the same time
- The Magnifier tracks mouse cursor and tracks text caret while typing
- The Magnifier also can track dialogs and the keyboard focus through lists, menus, icons, and other selectable items
- 400 different Magnification settings 1x, 1.1x, 1.2x ... 39.9x, 40x
- The special Magnifier Menu is easy to read.
- Cursor location lines to find cursor
- Cursor Location Lines are sizeable, color is selectable, and can even animate

Chapter 2. Getting Started

- Auto Position option to move away from cursor
- Lock position to magnify fixed screen location
- Lens View Mode
- Useful aid for visually impaired individuals
- Inverted colors option for high-contrast viewing
- Optional cursor display in magnified window
- Developer Tool Kit and Extensions
- Microsoft Windows 2000 / XP / Vista / 7 Compatible
- Keyboard Interface for managing

and controlling The Magnifier

- End-user and Developer Support

What You Need

To run The Magnifier you need the following equipment (hardware requirements):

- IBM 80386 or higher or compatible
- 25 mb hard disk space available
- 128 mb memory or higher
- Windows 2000 / XP / Vista / 7
- VGA or SVGA recommended

- Any Windows supported pointing device

Installing / Un-Installing The Magnifier

There are various ways to obtain IMG software, including (but not limited to):

- Web based / Internet download from IMG's web site (<http://www.imgpresents.com/demo.htm>)
- Shipped CD / DVD physical media

Chapter 2. Getting Started

- IMG Product Disc
- Download ISO image file and burn IMG Product Disc CD / DVD
- USB Flash Drive (pre-installed or installed from USB media web download)
- Single file install (from local network / internet / other media)
- IMG on-line account

Note: IMG Software is built by product and major version with minor releases. There is only 1 unique build, but can be packaged / delivered / obtained in various ways. When unlicensed, the software acts

Chapter 2. Getting Started

as a demonstration / evaluation copy, and operation will be limited in length or run-time or capabilities. Once licensed (typically via License Key and Serial Number, or OEM / Company-wide / Enterprise licensing), the software will operate with no limitations.

Recommendation: The quickest and easiest method for obtaining IMG software is to download the current version from IMG's web site (<http://www.imgpresents.com/demo.h> Download, then run the file to

Chapter 2. Getting Started

install. Test, review, play with, and verify the software meets your needs and requirements. When ready to purchase, go to the IMG License Manager, and click on the "Purchase License Now" button. If working on a machine without internet access, use the Standard or MSI single file download, or use a Product Disc option. Separately, purchase the license for the product directly on the website - once you have your License Key and Serial Number, you can install and license the software.

Chapter 2. Getting Started

The following outlines a standard retail Product Disc based install. For other options, refer to notes and details available at the source. In general, the approach is to install the software, then license the software.

The Product Disc Installation

Assistant provides an easy way to accomplish these two tasks.

- In Windows, insert the CD or DVD - the AutoRun feature will load the Installation Assistant - you may Install a licensed product , Install other product demos, or view Release Information. **If you have a Certificate of Authenticity, enter your License Key, Serial Number,**

and Name to Install and automatically License.

- If AutoRun is not enabled:
- In Windows, Click on the Start Button
- Select Run
- Select D:SETUP, or type D:SETUP (or E:SETUP if CD / DVD drive E:, etc.)
- Press (ENTER) or click on OK
- In Windows Vista, you may not have the Run Option - select Computer, your CD/DVD drive, and open Setup
- Answer the questions and follow the instructions on your screen

Chapter 2. Getting Started

Note: You may also Un-Install The Magnifier by running SETUP.EXE After The Magnifier has been properly installed. (The Magnifier Setup will ask you if you wish to Un-Install.) This has been provided as a convenience to the user. It is recommended that you use the Control Panel | Add/Remove Programs Icon to remove The Magnifier.

Starting The

Magnifier

Click on the Start Button, and open the Start Menu. Select (All) Programs, then Select The Magnifier. The Magnifier menu will have selections corresponding to the icons in the group. Select The Magnifier to begin operation.

The following icons will also be available in The Magnifier group:

The Magnifier - runs The Magnifier

The Magnifier Help - opens The Magnifier Help (opens this document)

Licensing Information - Displays current license status of The Magnifier, allows instant licensing

Chapter 2. Getting Started

Refer to The Magnifier Basic Operation Notes for a quick overview of The Magnifier. You can also use the keyboard shortcut **Alt-K** to see a list of available keyboard shortcuts for controlling The Magnifier.

Licensing Information

The Magnifier uses the IMG License Manager to manage the licensed use of this product. If unlicensed, the product will run as demo (i.e. a demonstration version). In the demo (unlicensed) mode, The Magnifier

Chapter 2. Getting Started

will run for about an hour, and then exit, displaying the license manager (announcing that it is unlicensed).

You may restart The Magnifier up to 100 times (the demonstration period limit). After the demonstration period is over, The Magnifier will not operate unless it is licensed. For extended evaluation and testing purposes, please contact IMG Customer Service for an evaluation license. Once licensed, the operation will not be limited in any way.

The most common methods of licensing are electronic (web/e-mail based) and by certificate (Certificate of Authenticity). In both cases, there will be a registered serial number, and

Chapter 2. Getting Started

a license key made available once a license has been purchased - these need to be entered into the IMG License Manager to activate a valid license. For further details, refer to the IMG License Manager. There is also USB storage device licensing, so The Magnifier can be run from the USB device, simply by inserting the licensed device into any system.

Note: There are numerous license schemes (including OEM, site, & enterprise licenses) available to meet the needs of all our customers. If you have any licensing questions, please contact

Innovation Management
Group, Inc. directly.

License Manager

In order to License The Magnifier, the correct License Key and Serial Number must be entered into the IMG License Manager, along with some text for the Customer (and optional Company) text areas. The License Key and Serial Number can be found on the Certificate of Authenticity, or in the Software Unlock Codes e-mail.

The Magnifier License Manager - Authentication

The screenshot shows a Windows-style dialog box titled "IMG License Manager - Authentication". It contains several sections: "License Information - Version 1.50.24242" with instructions on how to unlock the demo mode; "Information to provide with Payment" showing a "System ID: G150-1AD5-A5F3-A022" and a "Copy System ID to Clipboard" button; "Enter Unlock Codes" with fields for "License Key:", "Serial No.:", "Customer:", and "Company:"; and "Contacting Innovation Management Group, Inc. & License Information" with contact details. At the bottom are "Finish" and "Register Later" buttons.

IMG License Manager - Authentication

License Information - Version 1.50.24242
This product is locked in Demo mode. To unlock, register, and license this product, a registered Serial #, License Key and Customer Name must be entered. Please enter the information from your Certificate of Authenticity. To purchase a License, click on the Purchase License Now button (Internet connection required).

Information to provide with Payment
System ID: G150-1AD5-A5F3-A022

The System ID is required for proper licensing! It is important that the System ID be obtained from the already installed software. Click on Purchase License Now (above) to use this System ID.

Enter Unlock Codes
(Sent after payment approved)
License Key:
Serial No.:
Customer:
Company:

Contacting Innovation Management Group, Inc. & License Information
World Wide Web: <http://www.imgpresents.com/order.htm>
E-mail: order@imgpresents.com
USA & Canada (Toll Free): 1-800-889-0987

The License Key and Serial No. entries are a matched pair, and will work together to unlock the software. The Customer entry is required (i.e.

Chapter 2. Getting Started

some text must be entered in the Customer text area), but is not part of the license unlock process. The Company text area is optional, and will be shown as the Source when the product is licensed.

To quickly and easily license the software (on a system that has internet access), simply click on the "Purchase License Now" button. Once connected to IMG's website, you will be asked to enter billing information and payment information. Once paid, your order will be processed, and you will receive a confirmation e-mail and a separate e-mail with license information. Once the order is fully processed, you can then click the

Chapter 2. Getting Started

"Retrieve Purchased License" button to automatically license your system.

System ID Note: The System ID is used to accurately match the Product and Version you wish to license with the License Information provided. If the system you wish to License does not have Internet Access, you can use the Copy System ID to Clipboard to accurately copy the System ID to the clipboard (which can be saved in a text file or other document and moved to a system that does have Internet Access).

Chapter 2. Getting Started

Note: The "Retrieve Purchased License" uses a unique identifier to automatically license your system (which is only sent if the "Purchase License Now" is used). If you try this on a different system, or after a system update or re-install (or after a change to this unique ID), the software will not license automatically. You will either need to enter the License Key and Serial Number, or go into Additional License Options (see below) and use your Order Confirmation Number and Order E-mail to retrieve the license.

Important Note: Be sure to save and/or print your Order Confirmation number (with Order E-mail), along with your License Key and Serial Number in case you need to re-license the software in the future (Operating System Re-install, hard disk reformat, new system, etc.)

Certificate of Authenticity

Note: For Electronic Licenses, and Certificate of Authenticity can be retrieved on IMG's

Chapter 2. Getting Started

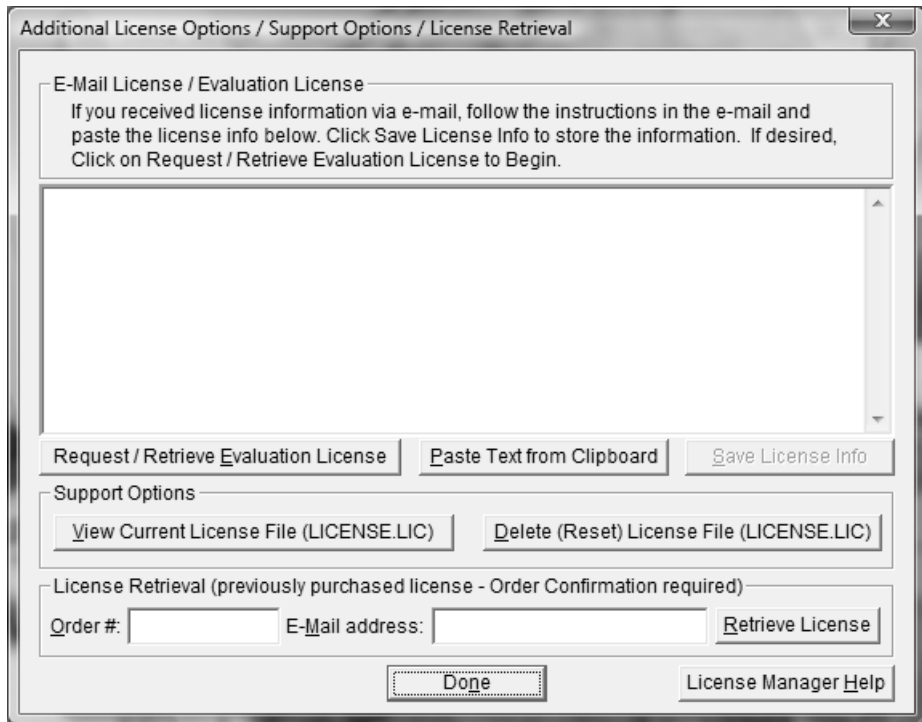
website:

<https://www.imgpresents.com/orders/a>

This requires a valid License Key and Serial Number. Once entered, you may view a PDF of the Certificate, or download the Certificate of Authenticity PDF file (for printing or saving).

The Magnifier License Manager - Additional

License Options



The Additional License Options section has tools and options to Enter or Paste Evaluation or Other License Information; Request and Retrieve Evaluation Licenses; Support Options to View and Delete (Reset) the

Chapter 2. Getting Started

License file; and a mechanism to retrieve a Purchased License by entering the Order Confirmation Number and the Order E-mail address.

Often, interested parties want to review or test the software without the demonstration license limitations, and to accommodate this, IMG makes available Evaluation Licenses. These Evaluation Licenses are fully functional licenses, but with a date limit (when the evaluation date has passed, the software will return back to the Unlicensed, Demonstration mode).

Evaluation Licenses may be requested

Chapter 2. Getting Started

at the Product Download pages on the website, or by using the Request / Retrieve Evaluation License button [here](#). Note that all Evaluation License requests are reviewed, and Evaluation Licenses must be created by IMG personnel (generation is not automated).

An Evaluation License sent via e-mail contains a block of text that has the license details for the License Manager. When sent via e-mail, the text can be copied and subsequently pasted into the text area [here](#) (Paste Text from Clipboard), then saved to enable (set) the License Information (Save License Info).

Chapter 2. Getting Started

Alternatively, if an Evaluation License is Requested, then after processing, it may be automatically Retrieved directly by clicking the Request / Retrieve Evaluation License button. Please refer to any additional information provided by the messages shown when using this approach.

The View Current License File (LICENSE.LIC) button will load the file LICENSE.LIC from the installation folder. This file contains the actual license information for the product, or the license information used to validate a License Key and Serial Number.

Note: Because an Evaluation

Chapter 2. Getting Started

License uses this same file, the Delete (Reset) option should be used if Licensing the product after using an Evaluation License.

The Delete (Reset) License File (LICENSE.LIC) will remove the existing LICENSE.LIC, then copy the file LICENSE.ORG to LICENSE.LIC (both in the installation folder). The file LICENSE.ORG is the "as shipped" license file, and should be the License File when using a License Key and Serial Number to license the software.

Chapter 2. Getting Started

Note: For License Purposes, using the Support Option to Delete (Reset) the License File is essentially the same as un-installing, then re-installing the software. Because this option is quicker and simpler, it is the preferred approach to resolve any license issues. Note that manually copying the file LICENSE.ORG to LICENSE.LIC (in the installation folder) performs the same operation as this option.

The License Retrieval Option will retrieve License Information from IMG's Website for electronically

Chapter 2. Getting Started

purchased licenses. The Order Confirmation Number and Order E-mail is required (which appear on the Order Confirmation page provided after successfully placing an on-line order, and are provided separately via an Order Confirmation E-mail).

Note: For Retrieved Licenses (via Retrieve Purchased License, and via the Retrieve License Support Option), License Key and Serial Number information is processed exactly as if this information was directly entered in the Authentication area. Therefore, all issues that may affect licensing also apply

to these automated options
(e.g. License File status, User
permissions, etc.)

The Magnifier License Manager - Licensed

Display



When properly Licensed, a screen similar to this will show the License Information for the product. The display of this indicates that the software is Licensed.

Note: Evaluation licenses also

show this screen during the days that the Evaluation License is valid.

Standard Settings

Settings in the standard configuration

The Magnifier starts in the window mode of operation in the default size and position. Refer to the next chapter for Common Configurations and how to set them up.

Commonly Asked Questions

Compatibility

1. Does The Magnifier work with all Windows Applications?

Yes.

Display

2. The Magnifier covers too much of my Window. What can I do?

Resize and/or reconfigure The Magnifier. Enable the Auto-Position option. Switch to the Full Screen mode of operation. Work with Developer's Kit to allow on-demand

display.

The Magnifier Operation

3. Can The Magnifier do full screen magnification?

Yes. You can use the **Alt-Z** keyboard shortcut to toggle between the Full Screen mode of operation and the Windowed mode.

4. Can I see the complete list shortcut keys?

Yes, use the keyboard shortcut **Alt-K** to open the help that shows the Complete List of Shortcut Keys.

5. How do I view the Cursor in the Magnifier?

The Magnifier Cursor indicator is

Chapter 2. Getting Started

selectable in menu, or you can use the keyboard shortcut **Alt-C** to toggle the display of the cursor within The Magnifier window.

6. In Full Screen mode, why does the cursor appear twice (different sizes)?

This is a result of the design of The Magnifier. The Full Screen mode synchronizes the magnified window relative to the underlying display, and the system's display of the cursor is unmodified. You can toggle the display of the magnified cursor (e.g. from the menu, or using **Alt-C**). For presentations or other uses, you can also toggle the display of the system

mouse cursor using **Alt-G**. For best results, you may wish to display a magnified cursor theme (available in Mouse Properties | Pointers) and disable the magnified cursor display. Systems with higher quality display subsystems (video adapter/video memory/monitor) may reduce the separation between the actual cursor and the magnified cursor display.

7. Why does magnification point jump around so much?

This is a result of the 3 events that can position the magnification point, the Mouse Cursor, the Text Caret, and the Keyboard Focus. The Text Caret and Dialogs & Keyboard Focus options are available from the Advanced

Chapter 2. Getting Started

Menu. You can toggle the Text and Keyboard tracking On and Off using **Alt-J**. Depending on these settings and your actions within Windows, the magnification point will adjust and track these events, which will override the normal mouse cursor magnification point. You can refer to the Advanced Notes for additional information.

System

8. How Much Memory does The Magnifier use while running?

This depends on your screen display colors, Windows version, and the current configuration. Normal operation requires less than 100K

RAM.

9. Does The Magnifier require any special drivers?

No. The Magnifier works with all standard Windows drivers. Unlike other magnification products that must install at a very low level, The Magnifier was designed to work as a standard windows application, and will operate seamlessly with any Windows system. Because the product relies almost exclusively on the display subsystem, the best, most up-to-date drivers for your video adapter is highly recommended. Using a higher quality video adapter (with larger amounts of high-speed

video RAM) in your system will provide smoother & cleaner operation.

Customer Support

The Magnifier Software is backed by a support staff trained to provide you with fast, courteous service. Over the years, IMG has astounded individuals at the quality of its software and its support. So that we can continue to focus our resources on development and providing high-quality products & support, we do appreciate your assistance in reviewing the help, manual, and support information available at our website to see if the

Chapter 2. Getting Started

problem or question has already been addressed. However, if you need assistance beyond what the manual, tutorial, help files, and on-line support database provide, please contact IMG Customer Service:

Innovation Management Group, Inc.

Customer Service

179 Niblick Road #454

Paso Robles, CA 93446

USA

1-800-889-0987 (US & Canada)

+1-818-701-1579

+1-818-936-0200 (fax)

<cs@imgpresents.com>

<http://www.imgpresents.com>

Chapter 2. Getting Started

To open a Technical Support case and create a support ticket, please refer to <https://www.imgpresents.com/orders/support>

Please provide, or have the following information ready when you ask for assistance:

- The Magnifier version number, update level.
- Registered serial number (or if running demo)
- Make and Model of your computer.
- Windows version number, any Service Packs or major updates.
- A description of the problem.

Chapter 2. Getting Started

- If possible, a list of the steps required to recreate the problem.
- If you have seen an error code, record and report the number.
- Additional information may be required, such as monitor type, type of pointing device, amount of RAM in your system, other software running (anti-virus, spyware, virtual machine, etc.).

Product Catalog

**Innovation Management Group,
Inc.'s Products**

Commercial Division Products...

Indestructible Keyboards &
Indispensable Utilities!

My-T-Soft® Build-A-Board

The Ultimate Tool for creating and
modifying On-Screen Keyboards,
buttons, and Panels. My-T-Soft
Family, plus Cross-Platform Support

My-T-Pen® for Windows

On-Screen Keyboards & Utilities for
Pen Based Systems

My-T-Touch® for Windows

On-Screen Keyboards & Utilities for
Touchscreens

My-T-Soft® for Windows

On-Screen Keyboards & Utilities for
any pointing device

My-T-Soft® TS for Terminal Services

On-Screen Keyboards for Terminal
Server / Terminal Services

TouchRight Utilities

Right Click Access for Pens &
Touchscreens

Assistive Technology Division Products...

Enabling Tools for Special Needs

AT Accessibility Suite

Chapter 2. Getting Started

IMG's Assistive Technology Software
with site license options

Joystick-To-Mouse

The Software That Lets You Run
Windows With A Joystick!

My-T-Mouse[®]

The Software That Makes Your
Mouse a Mouse That Types!
Indispensable & Utilities for any
Mouse or Trackball

OnScreen

Special Features for disabled &
impaired users Word Prediction /
Word Completion / Window Control /
Scanning

OnScreen with CrossScanner

Chapter 2. Getting Started

Complete control of Windows from a single switch! Support for Keyboard, Mouse, Joystick interfaces

SmartClick

Operate Windows without the need to Press/Click a Button

The Magnifier

Area and Full Screen Magnifier, Cursor Locator, Visual Aids

WordComplete

Word Completion, adaptive word prediction, Word List Management, etc. Type Better, Type Less - we do the rest!

For further

information...

Contact your Local Software Dealer

or

Innovation Management Group, Inc.

179 Niblick Road #454

Paso Robles, CA 93446

USA

1-800-889-0987 (US & Canada)

+1-818-701-1579

+1-818-936-0200 (fax)

<cs@imgpresents.com>

<http://www.imgpresents.com>

<http://www.my-t-mouse.com>

<http://www.my-t-pen.com>

<http://www.my-t-soft.com>

<http://www.my-t-touch.com>

Chapter 2. Getting Started

<http://www.onscreen-keyboard.com>

<http://www.build-a-board.com>

<http://www.joystick-to-mouse.com>

<http://www.themagnifier.us>

For International Contacts, please see
Web Site...

My-T-Mouse[®], My-T-Pen[®],
My-T-Touch[®] and My-T-Soft[®] are
registered trademarks of Innovation
Management Group, Inc.

Chapter 2. Getting Started

Part II. Using The Magnifier

**Description of
how to operate
and configure
The Magnifier.**

**Description of how to operate and
configure The Magnifier.**

Chapter 3 - Common

Configurations contains basic operation notes, and details on commonly used configurations & how to quickly setup these usage scenarios.

Chapter 4 - Windowed Operation

contains general operation information when operating with one or more magnification windows.

Chapter 5 - Full Screen Operation

contains general operation information when operating in the full screen mode

Chapter 6 - Magnifier Menu covers the alternate Magnifier Menu

Chapter 3.

Common

Configurations

The Magnifier

Common

Configurations

Overview

This section begins by covering basic operation options of The Magnifier, and then outlines basic configurations

Chapter 3. Common Configurations

and how to configure the product
(from startup defaults) to get there.

The Magnifier Basic Operation Notes

When running The Magnifier, there are 2 main modes of operation - as a window (with up to 7 magnifiers running concurrently), or in full screen mode. Because of the differences in these 2 modes of operation, some features are not available, or do not apply depending on the current mode in use. For detailed information, you can refer to

Chapter 3. Common Configurations

the chapters that cover these 2 modes in detail (Windowed and Full Screen).

Whenever The Magnifier is running, there will be a small magnifying glass icon in the system tray (next to the clock in the taskbar). You can always access The Magnifier menu by left or right clicking on this small icon.

When The Magnifier is in the window mode, double-clicking on The Magnifier window will switch to the Full Screen mode of operation. When the Full Screen mode of operation is in use, only 1 instance of The Magnifier will be running. If there is more than one instance of The Magnifier running prior to the switch to Full Screen mode, all but one will

Chapter 3. Common Configurations

be closed before the switch to the Full Screen mode occurs.

The best way to read using The Magnifier is to use the Arrow keys as panning tools. For left-to-right reading material, position your mouse cursor at the left-most part of the text, then let go of the mouse, and use the Ctrl-Right Arrow to pan to the right. Once you reach the end of the page (and need to go back to the left) let go of the keyboard (this will snap you back to the beginning). When you need to go down, use the Alt-Down Arrow to move the mouse cursor down (or simply reposition the mouse as appropriate).

Chapter 3. Common Configurations

Note: Depending on the magnification that works best for you, and other applications in use, enabling the MouseKeys accessibility in Windows may be beneficial (MouseKeys allows the Numeric keypad to move the mouse cursor). For further details on MouseKeys, refer to the Accessibility options in Windows (Ease of Access in Windows Vista).

By default, The Magnifier tracks the text caret (text cursor), dialogs, and keyboard focus (menus, icons, selections, etc.), along with tracking

Chapter 3. Common Configurations

the mouse cursor. When tracking the keyboard, the mouse tracking is disabled - to re-enable the mouse tracking, the mouse needs to move away from its current position. The keyboard options can be disabled within the Advanced Menu.

The Magnifier uses a standard menu for all available options (with other capabilities available through keyboard shortcuts). As a special feature within The Magnifier, there is also a Magnifier Menu that uses the entire screen for its display and uses large type. This large type menu has the same options as the standard menu, but may be preferable to some individuals. This is selectable in the

Chapter 3. Common Configurations

Advanced Menu.

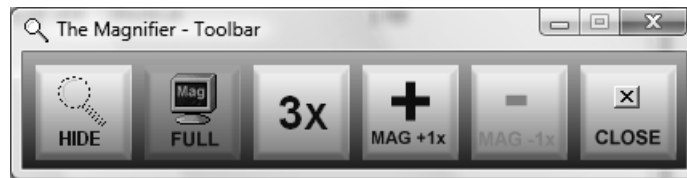
The Magnifier's basic operation is straightforward, and you can become proficient by reviewing this chapter alone, but there are numerous enhancements and advanced features available. Please refer to the following chapters, Advanced Notes, and the Developer's Kit utilities for even more details on The Magnifier capabilities.

The Magnifier Toolbar

The Magnifier Toolbar is a simple and straightforward visual tool bar that

Chapter 3. Common Configurations

allows the user to perform basic functions, without requiring any additional knowledge of the keyboard shortcuts, or how to access the menu. It is by default On, but can be disabled via the Advanced Menu.



The Magnifier Toolbar operation just requires a mouse click on the buttons displayed to perform the selected function. You can also use the keyboard to interface with it - use Alt-Tab to select the toolbar, then use the arrow keys to select buttons. Use the Space Bar to select a button (Note: [Enter] will not select a button). The

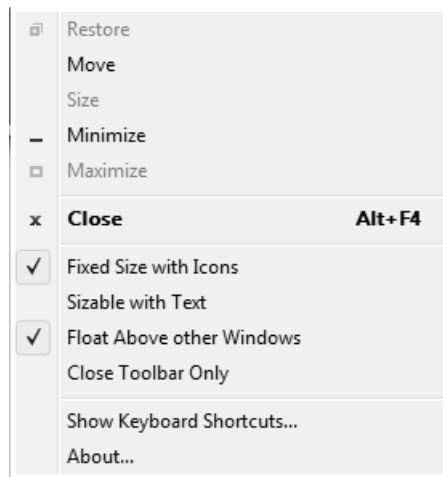
Chapter 3. Common Configurations

buttons will change based on the current status or The Magnifier (to reflect available options). The available options are as follows:

- **Show / Hide** If The Magnifier is visible, hide it. If hidden, show it.
- **Full Screen / Window** Toggles between the Full Screen mode and the Windowed mode of operation.
- **2X / 3X** If greater than 2X, go to 2X magnification. If at 2X magnification, go to 3X magnification.
- **Increase Magnification 1X**
Increase the magnification up to 9X magnification.

Chapter 3. Common Configurations

- **Decrease Magnification 1X**
decrease the current magnification
down to 2X magnification
- **Close** Close the Toolbar and The
Magnifier.



The Magnifier Toolbar has a system menu for basic Window functions such as move, minimize, etc., and adds additional options for several features.

Chapter 3. Common Configurations

- **Fixed Size with Icons** This is the default display, showing a row of icons indicating the operation available.
- **Sizable with Text** This makes the window sizable, and shows text that will attempt to fit into the buttons as best it can - the Toolbar window can be made larger or smaller as desired.
- **Float Above other Windows** This keeps the window Topmost, which will place it above most windows in the system.
- **Close Toolbar Only** This will close the Toolbar for the lifetime of The Magnifier. The next time The

Chapter 3. Common Configurations

Magnifier is run, the Toolbar will also be shown, unless disabled from the Advanced Menu in The Magnifier.

- **Show Keyboard Shortcuts...** This opens the Keyboard Shortcut List from the help file.
- **About...** A message showing information about The Magnifier Toolbar.

Chapter 3. Common Configurations



This is the Toolbar with the text mode enabled - in this mode, the window may be sized as desired. Certain sizes / configurations will display the text better (more readable) than others.

The Magnifier

Complete List of Shortcut Keys

**Table 3-1. Keyboard Shortcut
Quick Reference**

Mouse	Magni- fication	Letters	Arrows
Left Double- Click Go to Full Screen	Alt-1 1X magnifi- cation	Alt-A Alter- nate (Vista Only*[1])	Alt-Up Arrow Cursor Up

Chapter 3. Common Configurations

Left Click & Hold Drag lock	Alt-2 2X magnifi- cation	Alt-C Show / Hide Cursor	Alt- Down Arrow Cursor Down
Left Click Release drag lock	Alt-3 3X magnifi- cation	Alt-D Default size	Alt-Left Arrow Cursor Left
Right Click Open Menu	Alt-4 4X magnifi- cation	Alt-G Presen- tation Mode	Alt- Right Arrow Cursor Right

Chapter 3. Common Configurations

	Alt-5 5X magnifi- cation	Alt-I Invert Colors	Ctrl-Up Arrow Pan Up
Edit Keys	Alt-6 6X magnifi- cation	Alt-J Toggle Text tracking	Ctrl- Down Arrow Pan Down
Alt- Home Window Left	Alt-7 7X magnifi- cation	Alt-K This List (Short- cut keys)	Ctrl- Left Arrow Pan Left

Chapter 3. Common Configurations

Alt-Delete Window Left	Alt-8 8X magnifi- cation	Alt-L Lock Position	Ctrl-Right Arrow Pan Right
Alt-End Window Right	Alt-9 9X magnifi- cation	Alt-M Magnifi- cation dialog	Up Arrow Top border up
Alt-PgUp Window Up	Alt--(_) De- crease magnifi- cation -0.1	Alt-N Cursor Lines	Down Arrow Bottom border down

Chapter 3. Common Configurations

Alt-PgDn Window Down	Alt-=(+) Increase magnifi- cation +0.1	Alt-O Follows cursor toggle	Left Arrow Left border left
	Alt- ,(comma) De- crease magnifi- cation -0.1	Alt-Q Exit & Save	Right Arrow Right border right
	Alt- .(period) Increase magnifi- cation +0.1	Alt-R Lens View Toggle	Shift- Up Arrow Bottom border up

Chapter 3. Common Configurations

		Alt-S Show & Hide toggle	Shift-Down Arrow Top border down
		Alt-T Trans- parency	Shift-Left Arrow Right border left
		Alt-V Full Display toggle	Shift-Right Arrow Left border right

Chapter 3. Common Configurations

		Alt-Z Full Screen toggle	
--	--	--	--

The Most Useful Keyboard shortcuts, along with Other Useful Keyboard shortcuts is followed by the Complete List of Keyboard shortcuts. For a list categorized by function, see Shortcut Keys by Function.

IMPORTANT NOTE: For consistency, throughout this document, all shortcut keys will be represented as their default setting, e.g. Alt-[Key]. You can change the **Alt** key modifier to

Chapter 3. Common Configurations

Alt-Shift or **Ctrl-Shift** in the Advanced Menu | Keyboard Shortcuts... This affects all Alt keyboard shortcuts listed below EXCEPT the Alt+Arrow key panning functions.

Useful Mouse Operations

- **Left Double-Click** In the window mode of operation, this changes to the Full Screen mode of operation.
- **Left Click & Hold** In the window mode of operation, this engages a drag-lock (mouse cursor will change when in use), which allows you to drag The Magnifier around

Chapter 3. Common Configurations

without holding down a mouse button. To release, Left Click again.

- **Right Click** In the window mode of operation, this will open The Magnifier menu (based on current menu setting).

Most Useful Keyboard shortcuts

- **Alt-Z** Full Screen (Zoom) / Window toggle
- **Alt-S** Show & Hide The Magnifier window (toggle)
- **Alt-1, Alt-2, ..., Alt-9** 1X, 2X, thru 9X magnification
- **Alt-=(+)** Increase magnification +0.1

Chapter 3. Common Configurations

- **Alt--(underscore)** Decrease magnification -0.1
- **Alt-,(comma)** Decrease magnification -0.1
- **Alt-.(period)** Increase magnification +0.1
- **Alt-K** Show this list of Keyboard Shortcuts

Other Useful Keyboard shortcuts

- **Alt-C** Show / Hide Magnified Cursor
- **Alt-D** Return to default size (window mode only)
- **Alt-G** Presentation Mode (the Go away cursor mode - hides mouse

Chapter 3. Common Configurations

cursor)

- **Alt-I** Invert Colors shown in The Magnifier
- **Alt-J** Toggle Text tracking (both track text caret, dialogs on or off)
- **Alt-N** Show / Hide Cursor Lines
- **Alt-T** Show Transparency dialog
- **Alt-M** Show Magnification dialog
- **Alt-O** The Magnifier follows cursor toggle (window mode only)

Complete List of Keyboard Shortcuts

Keyboard Keys

- **Alt-1** 1X magnification

Chapter 3. Common Configurations

- **Alt-2** 2X magnification
- **Alt-3** 3X magnification
- **Alt-4** 4X magnification
- **Alt-5** 5X magnification
- **Alt-6** 6X magnification
- **Alt-7** 7X magnification
- **Alt-8** 8X magnification
- **Alt-9** 9X magnification
- **Alt-=(+)** Increase magnification
+0.1
- **Alt--(_)** Decrease magnification
-0.1
- **Alt-, (comma)** Decrease
magnification -0.1

Chapter 3. Common Configurations

- **Alt-.(period)** Increase magnification +0.1
- **Alt-A** Alternate Magnifier (Vista Only - see Note 1 below)
- **Alt-C** Show / Hide Magnified Cursor
- **Alt-D** Return to default size (window mode only)
- **Alt-G** Presentation Mode (the Go away cursor mode - hides mouse cursor)
- **Alt-I** Invert Colors shown in The Magnifier
- **Alt-J** Toggle Text tracking (both track text caret, dialogs on or off)
- **Alt-K** Show this list of Keyboard

Chapter 3. Common Configurations

Shortcuts

- **Alt-L** Lock Magnified Position
- **Alt-M** Show Magnification dialog
- **Alt-N** Show / Hide Cursor Lines
- **Alt-O** The Magnifier follows cursor toggle (window mode only)
- **Alt-Q** Close (Exit) The Magnifier
- **Alt-R** Lens View Mode (Round Magnifier) Toggle
- **Alt-S** Show & Hide The Magnifier window (toggle)
- **Alt-T** Show Transparency dialog
- **Alt-V** Full Display (entire Virtual desktop) toggle

Chapter 3. Common Configurations

- **Alt-Z** Full Screen (Zoom) / Window toggle

Edit Keys

- **Alt-Home** Move Window Left
- **Alt-Delete** Move Window Left
- **Alt-End** Move Window Right
- **Alt-PgUp** Move Window Up
- **Alt-PgDn** Move Window Down

Arrow Keys

Note: The Arrow Key combinations remain the same whether the Alt, Alt-Shift, or Ctrl-Shift modifier is in use (i.e. Alt-Up Arrow will always

Chapter 3. Common Configurations

perform the same operation regardless of which modifier combination is in use).

Note: The Alt-Arrow keys moves the mouse cursor to change the magnification point. This is for fine-tuning or zeroing in on a specific point, especially when the magnification is rather large. Also note there is an accessibility feature to control the mouse cursor from the Numeric keypad (MouseKeys). Also note that these Alt keys are not controlled by the Keyboard

Chapter 3. Common Configurations

Shortcuts setting in The Magnifier

Note: The Alt-Left Arrow and Alt-Right Arrow keys are shortcuts to move Forward and Backward in popular web browsers, and this will cause conflicts using these from The Magnifier (since the page you are viewing will change).

- **Alt-Up Arrow** Move Cursor Up (scroll magnification)

Chapter 3. Common Configurations

- **Alt-Down Arrow** Move Cursor Down (scroll magnification)
- **Alt-Left Arrow** Move Cursor Left (scroll magnification)
- **Alt-Right Arrow** Move Cursor Right (scroll magnification)

Note: The Ctrl-Arrow keys change the magnification point internally, so when the Control key is released, the magnification point will return to the mouse cursor position (snaps back). This is an alternate approach to pan or scroll the magnification without affecting anything else in the system but what is shown in

Chapter 3. Common Configurations

The Magnifier's display.

- **Ctrl-Up Arrow Move**
Magnification point Up
(temporarily scroll magnification)
- **Ctrl-Down Arrow Move**
Magnification point Down
(temporarily scroll magnification)
- **Ctrl-Left Arrow Move**
Magnification point Left
(temporarily scroll magnification)
- **Ctrl-Right Arrow Move**
Magnification point Right
(temporarily scroll magnification)

Chapter 3. Common Configurations

Note: The Arrow keys can size & position The Magnifier window. You must click on and give the keyboard focus to The Magnifier for these keys to operate. These only work in the Window mode of operation.

- **Up Arrow** Move top border up
- **Down Arrow** Move bottom border down
- **Left Arrow** Move left border left
- **Right Arrow** Move right border right

Chapter 3. Common Configurations

- **Shift-Up Arrow** Move bottom border up
- **Shift-Down Arrow** Move top border down
- **Shift-Left Arrow** Move right border left
- **Shift-Right Arrow** Move left border right

Note 1 (Vista Only): In Windows Vista, Microsoft has created a magnification interface that creates a useful mechanism for doing the screen magnification while in Vista. Depending on your system configuration, video

Chapter 3. Common Configurations

adapter, video adapter driver, monitor resolution, and display settings, this magnification may not render. In all cases, it is recommended you update your system or drivers to enable Vista to work correctly. When the magnification subsystem is not operating in Vista, The Magnifier's background window will be visible, and text will be displayed outlining the option of using an alternate magnification scheme (accessible using Alt-A). This is provided only as an alternate, failsafe type magnification option for users of The Magnifier. Refer to Advanced

Chapter 3. Common Configurations

Notes regarding the Alternate Magnification in Vista.

Note 2 - Keyboard Focus & The Magnifier: Because The Magnifier is a user-interface enhancement, and operates alongside the user's normal use of basic programs and applications, the user will most often have the keyboard focus everywhere but The Magnifier. Because customers asked for a way to control & modify The Magnifier while working within Windows, The Magnifier must monitor the keyboard

Chapter 3. Common Configurations

independently of the normal way programs work within Windows (i.e. where only the program with keystroke focus sees/reacts to the keyboard). This all works wonderfully, and makes everyone happy, up until there is a conflict between a keystroke combination The Magnifier reacts to, and when that particular keystroke combination is used within the program the user is currently working with. In some cases, the problem may only be a minor annoyance - at other times, it may be a serious impediment. If there is a serious conflict, then selecting

Chapter 3. Common Configurations

one of alternate shortcut modifiers is the best option (and will reduce the possibility of a conflict). You can choose from the Alt key, the Alt+Shift keys, or Control+Shift key modifiers.

Note 3 - Operation Notes:

When multiple magnifiers are running, some of the keyboard shortcuts will affect ALL magnifiers running. In some cases, using the menu options when multiple magnifiers are running may be more effective (e.g. positioning, setting

Chapter 3. Common Configurations

features, etc.).

Note 4 - Advanced Notes:

The keyboard shortcuts are implemented in 2 distinct ways. 1 approach uses 3 sets of Keyboard Accelerators (for Alt, Alt-Shift, and Ctrl-Shift), that are used when The Magnifier has the keyboard focus. The other is a keyboard monitoring approach (using the `GetAsyncKeyState` Windows API) for the combination key and the shortcut key. The sizing options using the arrow keys (and shift-arrow keys) are

only implemented as keyboard accelerators (requiring focus to be on The Magnifier).

The Magnifier Shortcut Keys by Function

This lists the keyboard shortcuts by function in various categories. For the complete list, with operation notes, see the Complete List of Keyboard Shortcuts.

Keyboard Shortcuts by Function Category

Magnification Factor control

- **Alt-1** 1X magnification
- **Alt-2** 2X magnification
- **Alt-3** 3X magnification
- **Alt-4** 4X magnification
- **Alt-5** 5X magnification
- **Alt-6** 6X magnification
- **Alt-7** 7X magnification
- **Alt-8** 8X magnification
- **Alt-9** 9X magnification
- **Alt-=(+)** Increase magnification

Chapter 3. Common Configurations

+0.1

- **Alt--(underscore)** Decrease magnification

-0.1

- **Alt-,(comma)** Decrease magnification -0.1

- **Alt-.(period)** Increase magnification +0.1

- **Alt-M** Show Magnification dialog

Important Display Options

- **Alt-C** Show / Hide Magnified Cursor

- **Alt-D** Return to default size (window mode only)

- **Alt-I** Invert Colors shown in The

Chapter 3. Common Configurations

Magnifier

- **Alt-R** Lens View Mode (Round Magnifier) Toggle
- **Alt-S** Show & Hide The Magnifier window (toggle)
- **Alt-V** Full Display (entire Virtual desktop) toggle
- **Alt-Z** Full Screen (Zoom) / Window toggle

Special Display Options

- **Alt-G** Presentation Mode (Go away cursor - hides mouse cursor temporarily)
- **Alt-L** Lock Magnified Position

Chapter 3. Common Configurations

- **Alt-N** Show / Hide Cursor Lines
- **Alt-O** The Magnifier follows cursor toggle (window mode only)
- **Alt-T** Show Transparency dialog

Move / Size The Magnifier in Window Mode

- **Alt-Home** Move Window Left
- **Alt-Delete** Move Window Left
- **Alt-End** Move Window Right
- **Alt-PgUp** Move Window Up
- **Alt-PgDn** Move Window Down
- **Up Arrow** Move top border up
- **Down Arrow** Move bottom border down

Chapter 3. Common Configurations

- **Left Arrow** Move left border left
- **Right Arrow** Move right border right
- **Shift-Up Arrow** Move bottom border up
- **Shift-Down Arrow** Move top border down
- **Shift-Left Arrow** Move right border left
- **Shift-Right Arrow** Move left border right

Control Magnification Point

- **Alt-Up Arrow** Move Cursor Up (scroll magnification)

Chapter 3. Common Configurations

- **Alt-Down Arrow** Move Cursor Down (scroll magnification)
- **Alt-Left Arrow** Move Cursor Left (scroll magnification)
- **Alt-Right Arrow** Move Cursor Right (scroll magnification)
- **Ctrl-Up Arrow** Move Magnification point Up (temporarily scroll magnification)
- **Ctrl-Down Arrow** Move Magnification point Down (temporarily scroll magnification)
- **Ctrl-Left Arrow** Move Magnification point Left (temporarily scroll magnification)
- **Ctrl-Right Arrow** Move

Chapter 3. Common Configurations

Magnification point Right
(temporarily scroll magnification)

Miscellaneous Options

- **Alt-A** Alternate Magnifier (Vista Only - see Note 1 (Complete List))
- **Alt-J** Toggle Text tracking
- **Alt-K** Show this list of Keyboard Shortcuts
- **Alt-Q** Close (Exit) The Magnifier

The Magnifier Full Screen Operation -

Common Configurations

Alt-Z Full Screen (Zoom) / Window toggle

Without a doubt, the most common question about The Magnifier is: "Can it operate as a Full Screen magnifier?" Prior to the 1.50 Release, this capability was not present. Now we are pleased to offer an affordable, simple to use, powerful Full Screen magnifier!

After Installation, when you start The Magnifier, the default operation is an area magnifier, displayed in a window, centered on your screen. To quickly &

Chapter 3. Common Configurations

easily turn on (or off) the Full Screen magnification, use **Alt-Z**

Shortcut Keys: For consistency, throughout this document, all shortcut keys will be represented as their default setting, e.g. Alt-[Key]. Please note that there are 3 selectable keystroke combinations available for all these keys - Alt-[Key], Alt-Shift-[Key], and Ctrl-Shift-[Key] (this is configurable in the Advanced menu). See the Complete List of Shortcut Keys for more information.

The Magnifier Color Inversion Operation - Common Configurations

Some people find the color inversion option helpful and it makes reading easier. To turn The Magnifier into a quick color inversion toggle tool, configure it as follows:

After Installation, when you start The Magnifier, the default operation is an area magnifier, displayed in a window, centered on your screen. Use **Alt-Z** to turn on the Full Screen magnification. Use **Alt-1** to set 1x Magnification (no

Chapter 3. Common Configurations

magnification). Use **Alt-I** to turn on the Color Inversion. Now you can use **Alt-S** to toggle color inversion of your screen. If helpful, other magnification settings can be used - Use **Alt-+ (=)** to step up by 0.1x magnification.

Shortcut Keys: For consistency, throughout this document, all shortcut keys will be represented as their default setting, e.g. Alt-[Key]. Please note that there are 3 selectable keystroke combinations available for all these keys - Alt-[Key], Alt-Shift-[Key], and Ctrl-Shift-[Key] (this is configurable in the Advanced menu). See the Complete List

Chapter 3. Common Configurations

of Shortcut Keys for more information.

The Magnifier Return to Defaults - Common Configurations

Alt-D Return to default size (window mode only)

Most users appreciate the quick & easy shortcut keys that allow rapid

Chapter 3. Common Configurations

changes & access to all of The Magnifier's feature. However, there can arise conflict with other applications, and unexpected actions if these shortcut keys are used separately from The Magnifier. To quickly & easily return to the default settings with The Magnifier, use **Alt-D**

Shortcut Keys: For consistency, throughout this document, all shortcut keys will be represented as their default setting, e.g. Alt-[Key]. Please note that there are 3 selectable keystroke combinations available for all these keys -

Chapter 3. Common Configurations

Alt-[Key], Alt-Shift-[Key], and Ctrl-Shift-[Key] (this is configurable in the Advanced menu). See the Complete List of Shortcut Keys for more information.

The Magnifier tracks Mouse Cursor - Common Configurations

Alt-O Toggles tracking (following)

Chapter 3. Common Configurations

the Mouse Cursor

When operating in the Window mode, the actual positioning of The Magnifier window can sometimes be problematic, depending on the actual application being used and its requirements. By enabling the Track Cursor mode (or The Magnifier window follows the mouse cursor), The Magnifier window is able to "tag along" with the mouse cursor. To enable or cancel this mode, use **Alt-O**

Shortcut Keys: For consistency, throughout this document, all shortcut keys will be represented as their default setting, e.g. Alt-[Key]. Please

Chapter 3. Common Configurations

note that there are 3 selectable keystroke combinations available for all these keys - Alt-[Key], Alt-Shift-[Key], and Ctrl-Shift-[Key] (this is configurable in the Advanced menu). See the Complete List of Shortcut Keys for more information.

The Magnifier Starts with Windows - Common

Configurations

When you install using the IMG installation files, you have the option of selecting "Add to Startup Group" - if you have already installed, used the MSI (Windows) installer, or need to remove or add to the StartUp group, please refer to these notes.

The quickest and easiest way to access the StartUp group is to do the following:

- Right-click on the Start Menu button
- Select Explore all users
- Double-click (select) the Programs

Chapter 3. Common Configurations

folder

- Double-click (select) the StartUp folder
- If The Magnifier's icon is there and you want to remove it, you can delete it.
- If you want to add The Magnifier's icon, you can right-click, and select New | Shortcut - then select The Magnifier from the \Program Files\The Magnifier folder.
Alternatively, you can copy the Desktop icon, then paste it into this folder.

Note: The actual location changes based on which

Chapter 3. Common Configurations

version of Windows you use.

The above outlines how to add to the All Users section (so All Users will be affected). You can also only add the icon to your StartUp files. The details of Windows, and how to configure various versions of Windows is beyond the scope of this Help document.

Chapter 3. Common Configurations

Chapter 4.

Windowed

Operation

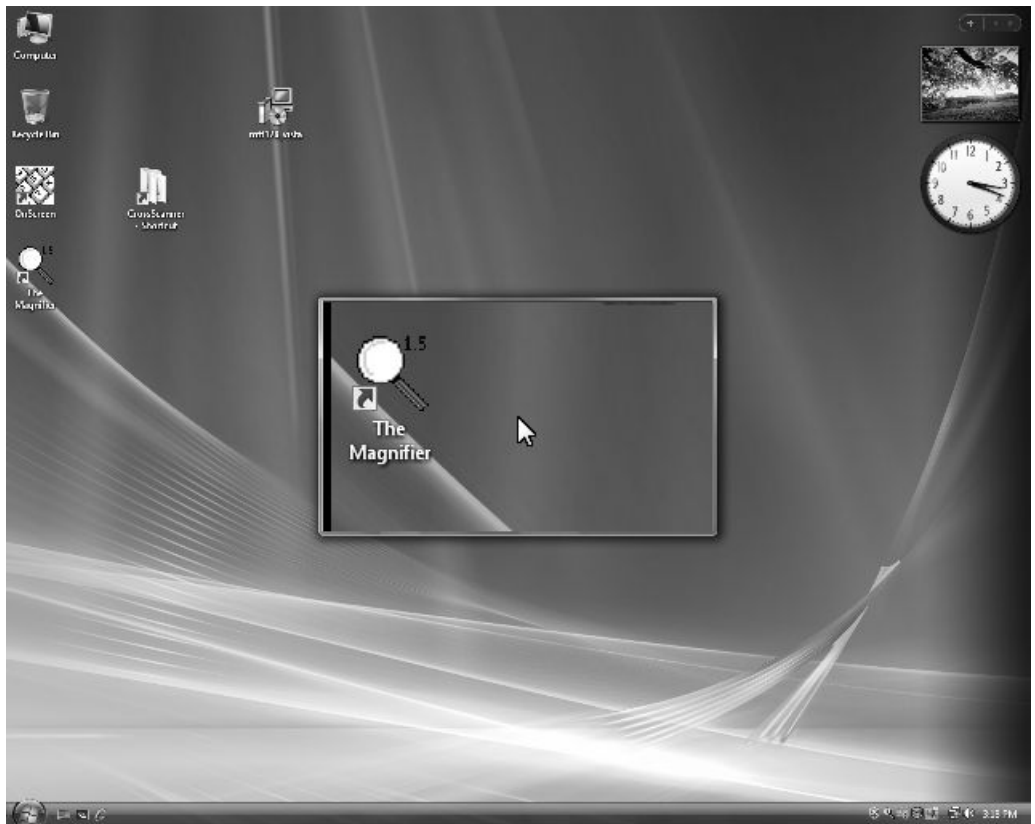
The Magnifier

Windowed Operation

Overview

The Magnifier Windowed Operation Overview outlines all options for running as a window.

Chapter 4. Windowed Operation

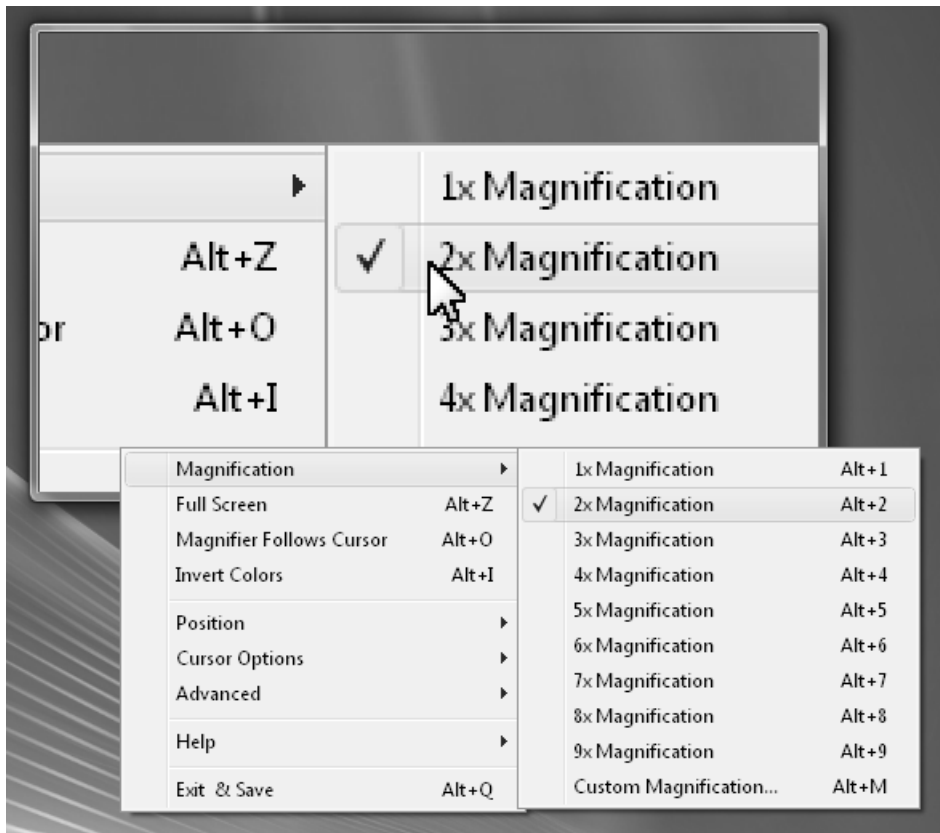


The above image is an example of The Magnifier running in a window with the default settings.

Magnification

This feature allows you to control the magnification of your screen. You can select the magnification via the menu or by using **Alt-1**, **Alt-2**, **Alt-3**, **Alt-4**, **Alt-5**, **Alt-6**, **Alt-7**, **Alt-8**, **Alt-9**, or by using **Alt-M** for the Magnification dialog.

Chapter 4. Windowed Operation

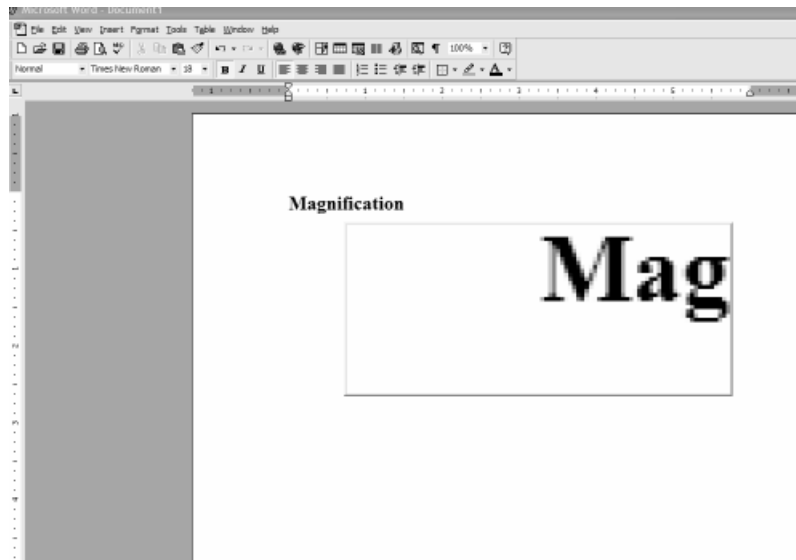


1x Magnification This selection does not change the image on your computer screen. By making this selection you will simply be able to view the screen without any magnification (exactly as it appears).
Keyboard Shortcut: **Alt-1**

Chapter 4. Windowed Operation

2x Magnification This selection will allow The Magnifier to show the images on your screen twice as large as they would normally appear. Keyboard Shortcut: **Alt-2**

3x Magnification This selection will allow The Magnifier to show the image on your screen three times as large as they would normally appear. Keyboard Shortcut: **Alt-3**



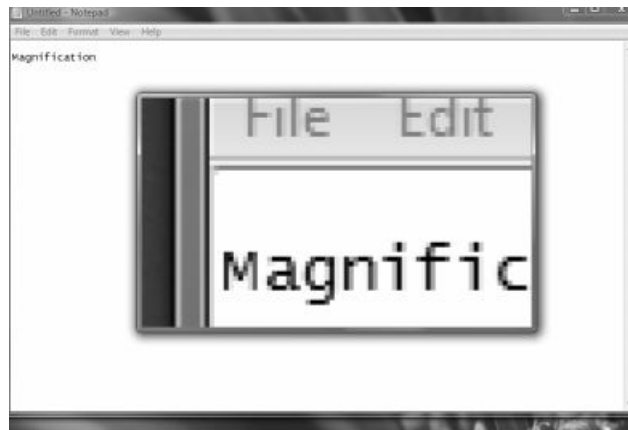
Chapter 4. Windowed Operation

4x Magnification This selection will allow The Magnifier to show the image on your screen four times as large as they would normally appear.

Keyboard Shortcut: **Alt-4**

5x Magnification This selection will allow The Magnifier to show the image on your screen five times as large as they would normally appear.

Keyboard Shortcut: **Alt-5**



6x Magnification This selection will

Chapter 4. Windowed Operation

allow The Magnifier to show the image on your screen six times as large as they would normally appear.

Keyboard Shortcut: **Alt-6**

7x Magnification This selection will allow The Magnifier to show the image on your screen seven times as large as they would normally appear.

Keyboard Shortcut: **Alt-7**

8x Magnification This selection will allow The Magnifier to show the image on your screen eight times as large as they would normally appear.

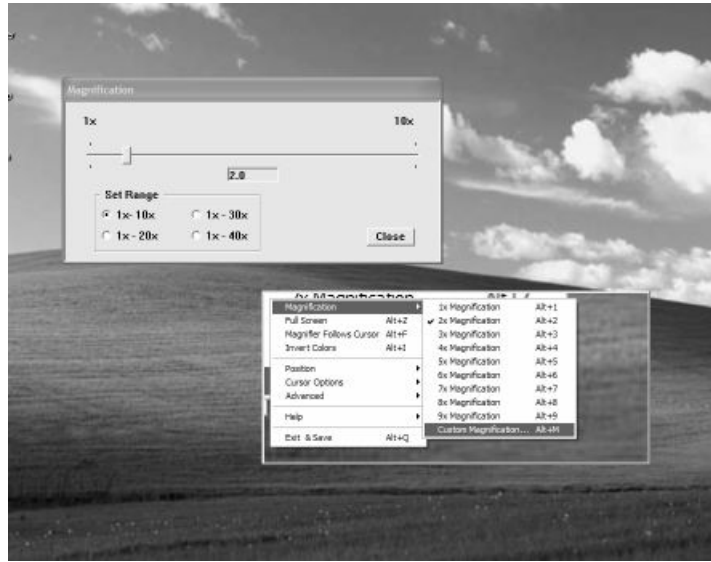
Keyboard Shortcut: **Alt-8**

9x Magnification This selection will allow The Magnifier to show the image on your screen nine times as

Chapter 4. Windowed Operation

large as they would normally appear.

Keyboard Shortcut: **Alt-9**

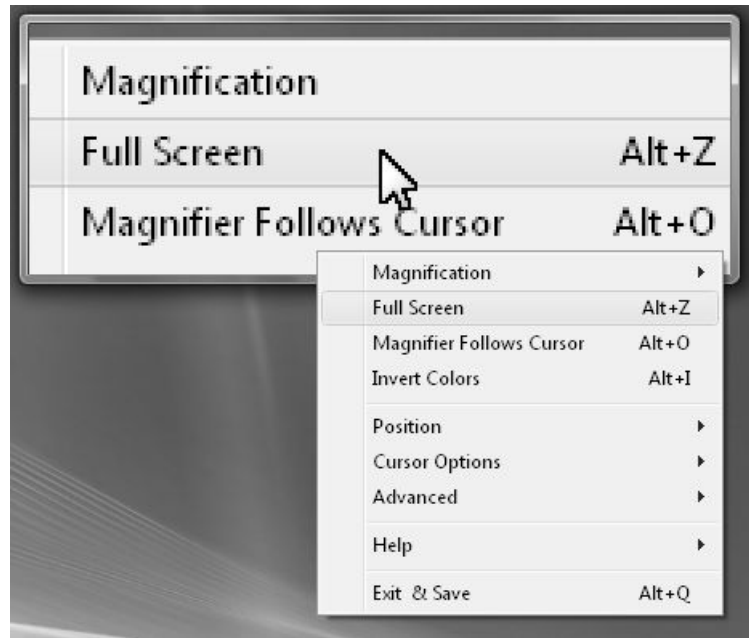


Custom Magnification This selection allows you to customize your screen magnification. The default settings on this menu will be a range of 1x-10x's the magnification of the original image, but if you wish to magnify more, there is a dialog labeled 'Set Range' which will allow you to chose

Chapter 4. Windowed Operation

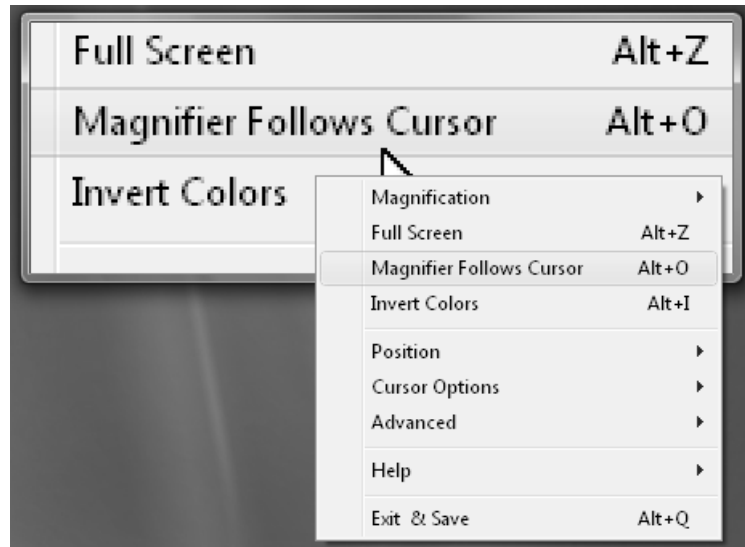
1x-10x's, 1x-20x's, 1x-30x's, or 1x-40x's. Once you have selected the proper range, move the slider to your desired magnification settings then click to close. Keyboard Shortcut: **Alt-M**

Full Screen



Full Screen When selected in the Windowed mode of operation, this will go to the Full Screen mode of operation. Keyboard Shortcut: **Alt-Z**. For further details on Full Screen operation, see the next chapter.

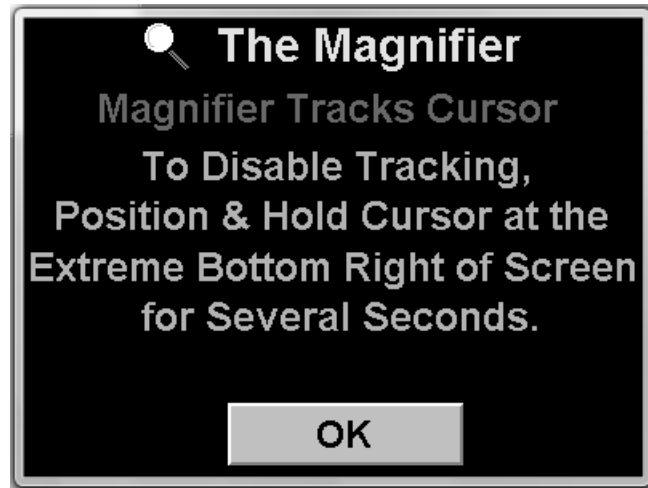
The Magnifier Follows Cursor



This option results in The Magnifier's window to follow the cursor as you move it across your screen. The position of The Magnifier window relative to the mouse cursor will change to make sure it is always visible on the screen. You can enable /

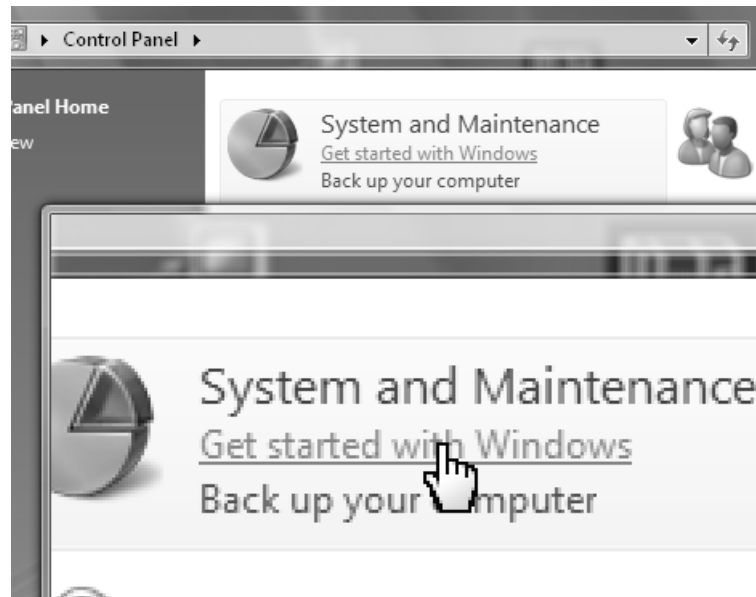
Chapter 4. Windowed Operation

disable this mode by using the menu,
or the keyboard shortcut **Alt-O**.



When enabled, there will be a
notification window shown.

Chapter 4. Windowed Operation

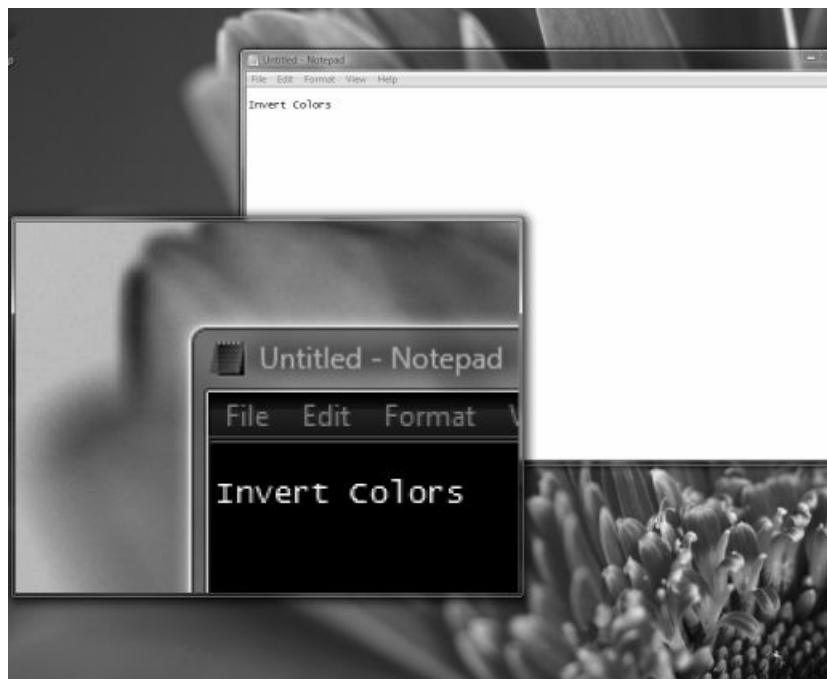


When operating in this mode, the ability to click (right-click) on The Magnifier window is impossible (since The Magnifier window constantly repositions based on the actual mouse cursor position). To disable this mode, you can click on the small icon in the tray to access the menu and toggle the mode by selecting the menu option, or you can

Chapter 4. Windowed Operation

use the keyboard shortcut **Alt-O**, or you can hold the mouse cursor at the bottom right of the screen for several seconds.

Invert Colors



This option causes the colors of the screen to become inverted which can help individuals who need high-contrast viewing. Keyboard Shortcut: **Alt-I**

Position

This feature allows the user to position The Magnifier's window where ever they desire it to be on their computer screen. The Magnifier's window can be moved manually at anytime, simply by holding down the left mouse button and dragging the window to your desired location, or by dragging the window frame(s) as

Chapter 4. Windowed Operation

necessary. Also note that if you click on The Magnifier's window, you can use your Arrow keys and Shift-Arrow keys to adjust the size & position.

Note: If you left click and hold for more than a second, the drag-lock will engage. To clear this, left click again.

Chapter 4. Windowed Operation



Set Position Within the Position menu there is a Set Position sub-menu with a list of preset window positions.

Lock Position This feature allows you to keep a specific spot on your computer's screen magnified in The Magnifier while you work. When you click on "Lock Position" a notification window will displayed indicating how

Chapter 4. Windowed Operation

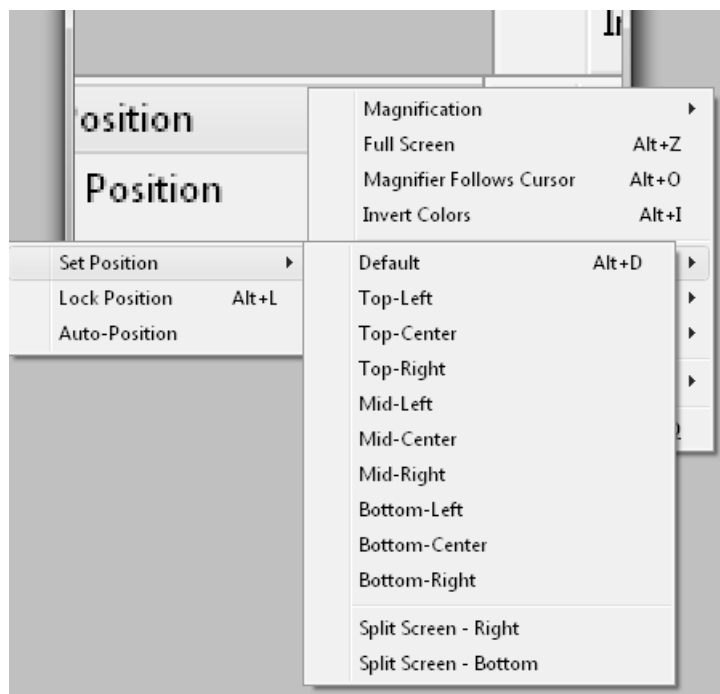
to use the feature. You may move your mouse around to locate the exact magnification point. Once your mouse cursor is positioned at the desired location, click the with your left-mouse button. This will lock the area that is being magnified. To clear the lock, use **Alt-L** again, or clear the check mark in the Position menu.

Auto-Position This feature, when enabled, allows you to see under The Magnifier's window automatically. When you hover over The Magnifier's window with your cursor for a few seconds, it will automatically reposition to another screen location. The sequence is top-left to top-right to bottom-left to bottom-right. If you are

Chapter 4. Windowed Operation

in one of the "Split Screen" options this feature allows you to hover over The Magnifier's window to have it automatically move to the other half of your screen.

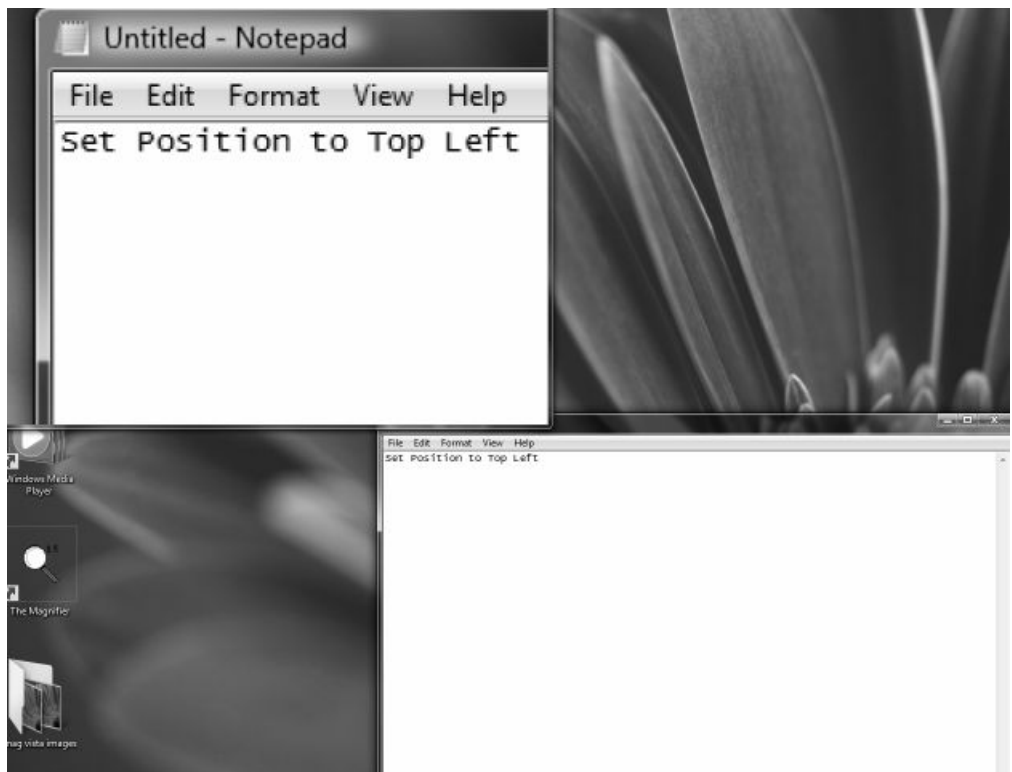
Set Position



Chapter 4. Windowed Operation

This menu is where the pre-set positions for The Magnifier's window can be found.

Default The default option sets The Magnifier's window back to the center of your computer's screen. You can also use **Alt-D** keyboard shortcut to return to the default position.



Chapter 4. Windowed Operation

Top-Left The top-left option will take The Magnifier's window to the top-left corner of your screen.

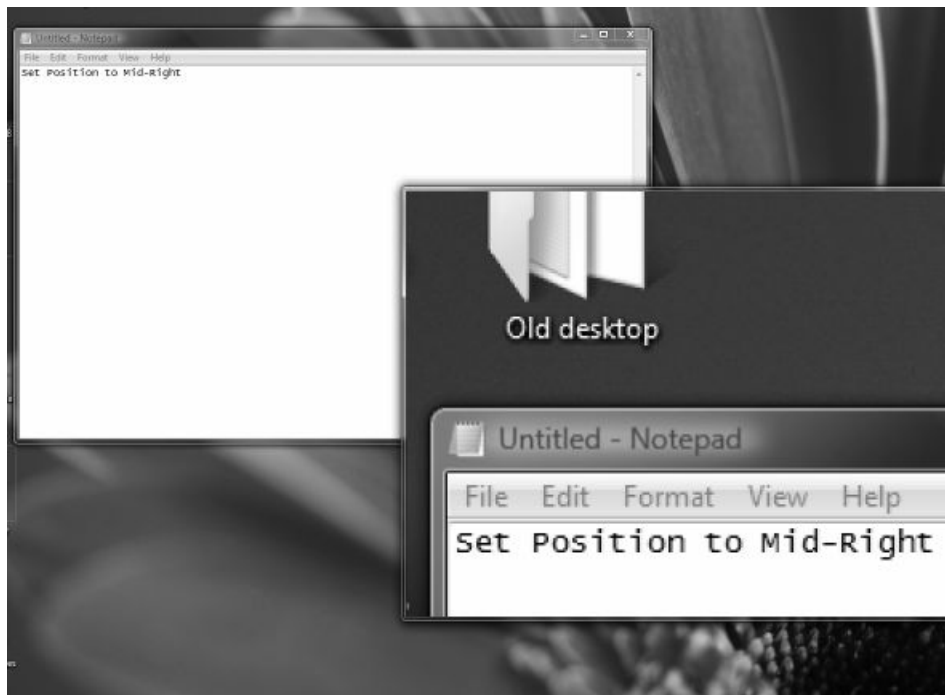
Top-Center This option sets The Magnifier's window to the top-center of your screen.

Top-Right This option sets The Magnifier's window to the top-right corner of your screen.

Mid-Left This option sets The Magnifier's window in the left, center portion of your screen.

Mid-Center This option sets The Magnifier's window in the exact center of your screen.

Chapter 4. Windowed Operation



Mid-Right This option sets The Magnifier's window in the right, center portion of your screen.

Bottom-Left The option sets The Magnifier's window in the bottom-left side of your screen.

Bottom-Center This option sets The Magnifier's window in the center

Chapter 4. Windowed Operation

portion of the bottom your screen.

Bottom-Right This option will place The Magnifier's window in the bottom-right portion of your screen.

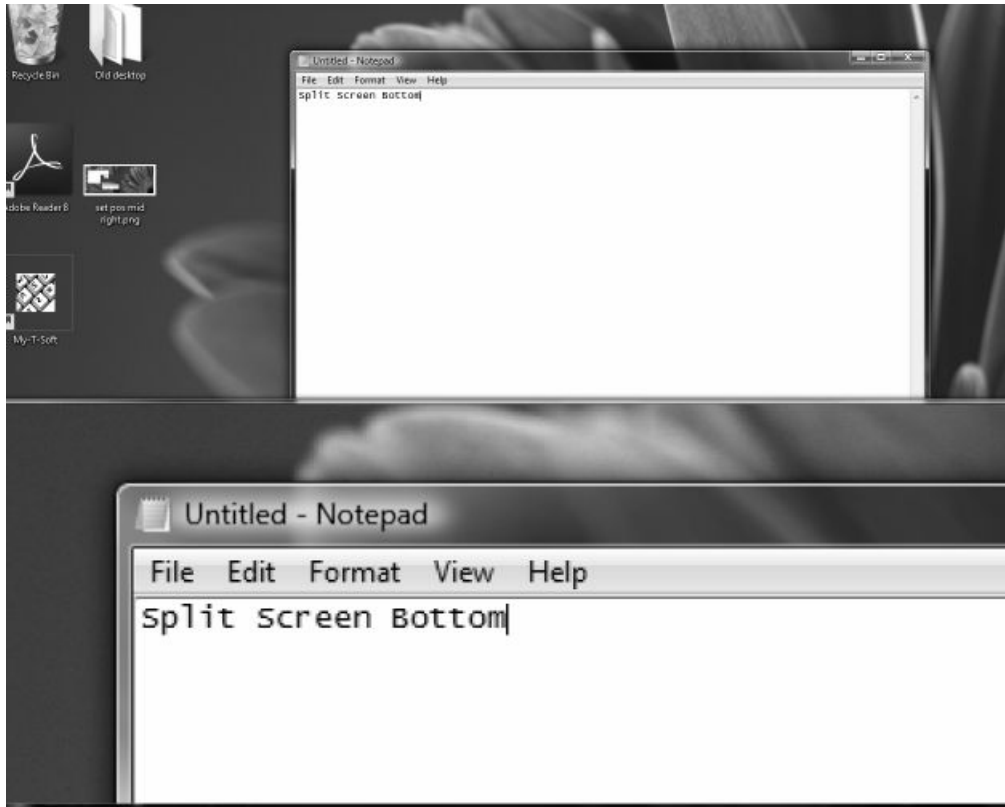


Split Screen - Right This option will enlarge The Magnifier's window to the entire right side of your screen. In order to utilize the items on the

Chapter 4. Windowed Operation

right-hand portion of your computer screen you will need to move The Magnifier's window to the left-hand portion of the screen - which can be done by simply dragging it with your left mouse button. The benefit to this option is that the area that The Magnifier is magnifying will increase greatly.

Chapter 4. Windowed Operation



Split-Screen - Bottom This option will enlarge The Magnifier's window to the entire bottom portion of your screen. In order to utilize the items normally found on the bottom of your screen, you must drag The Magnifier's window using your left mouse button. The benefit to this

Chapter 4. Windowed Operation

option is that it enlarges the area The Magnifier is magnifying.

Cursor Options

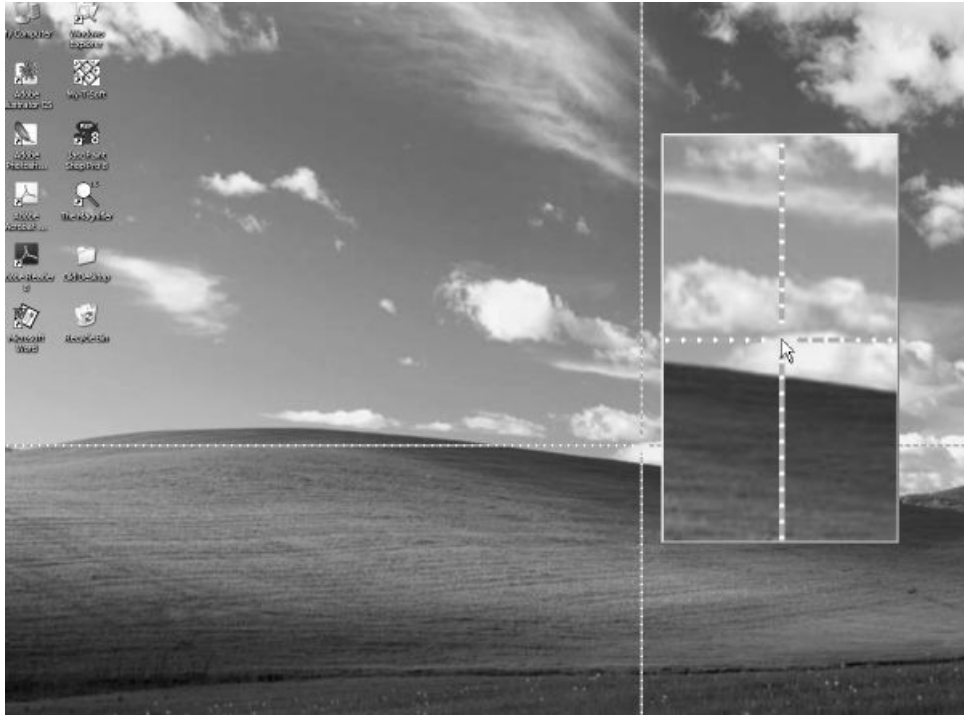
The options in this portion of the menu allow you to control different aspects of how The Magnifier works with the mouse cursor.



Chapter 4. Windowed Operation

Display Cursor If this option is checked in your menu then a magnified mouse cursor will not be visible in The Magnifier's window, shown at the relative location of the current mouse cursor in the magnified view. When this option is clear, the mouse cursor will not be shown in The Magnifier's window. Keyboard Shortcut: **Alt-C**

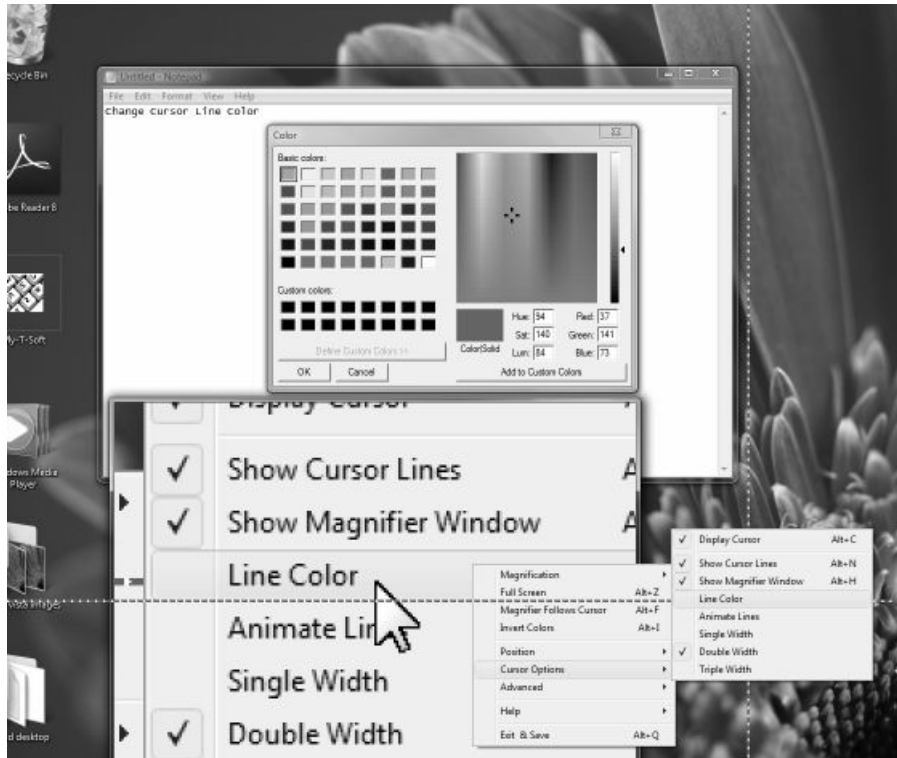
Chapter 4. Windowed Operation



Show Cursor Lines This option causes two perpendicular lines, which intersect at your cursor, to appear on your screen. This option can be a useful tool if you are trying to locate the cursor, or have visual impairments that make it difficult to see the entire screen. Keyboard Shortcut: **Alt-N**

Show Magnifier Window When selected, this option will show The Magnifier's window, but if it is unchecked in The Magnifier's menu, the window will no longer be visible on your computer screen. You can use the **Alt-S** keyboard shortcut to toggle the visibility of The Magnifier window.

Chapter 4. Windowed Operation



Line Color This option will allow you to change the color of the cursor lines.

Animate Lines This option animates the movement of the cursor lines, which may make it easier to find for certain individuals.

Single Width This option controls the

Chapter 4. Windowed Operation

width of your cursor lines, making them the default - and smallest - size The Magnifier offers.

Double Width This option makes the cursor lines twice the size of the default option.

Triple Width This option makes the cursor lines three times the size of the default option.

Advanced

The Advanced Menu contains various settings & options that are more advanced or address specialized settings and features.

Chapter 4. Windowed Operation



Use Magnifier Menu This option will allow you to use The Magnifier's window instead of a standard menu when you right-click on The Magnifier's window. This menu has large type, and fills the screen - see Magnifier Menu for more details.

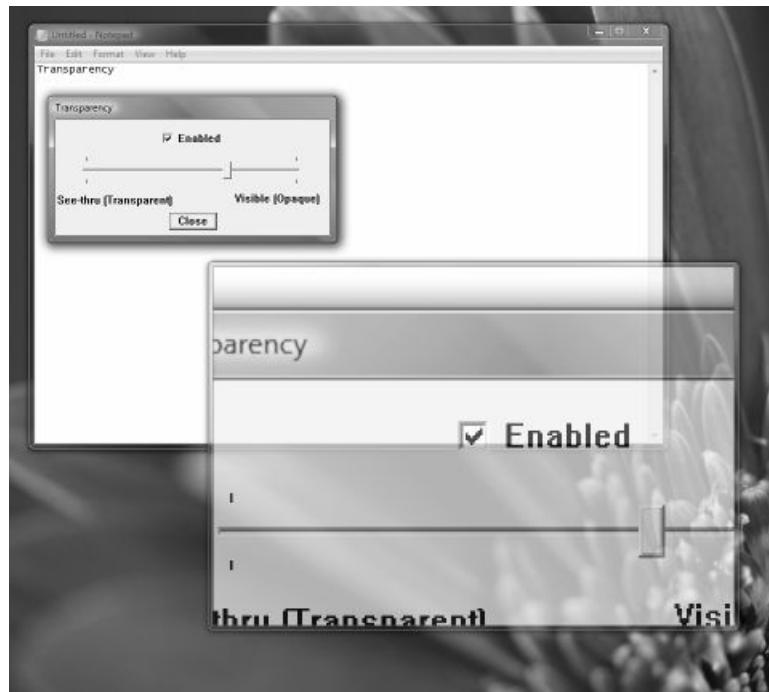
Chapter 4. Windowed Operation

Use Magnifier Toolbar This option displays a separate Toolbar that can control some basic functions such as Show/Hide, Full Screen/Windowed, 2X/3X, increase or decrease magnification. This is by default On. By selecting this option, you can turn off or turn on the Toolbar. The Toolbar provides a first time user a visual tool that allows them to perform basic functions, without having to learn the keyboard shortcuts or how to access the menu. This was originally suggested for situations where The Magnifier was used in a public locations, and new/unfamiliar users would be exposed to The Magnifier without any previous knowledge on

Chapter 4. Windowed Operation

how to operate The Magnifier. There are various options - see The Magnifier Toolbar for more details.

Full Screen Options This menu has options for the Full Screen mode of operation - refer to the next chapter for these options.

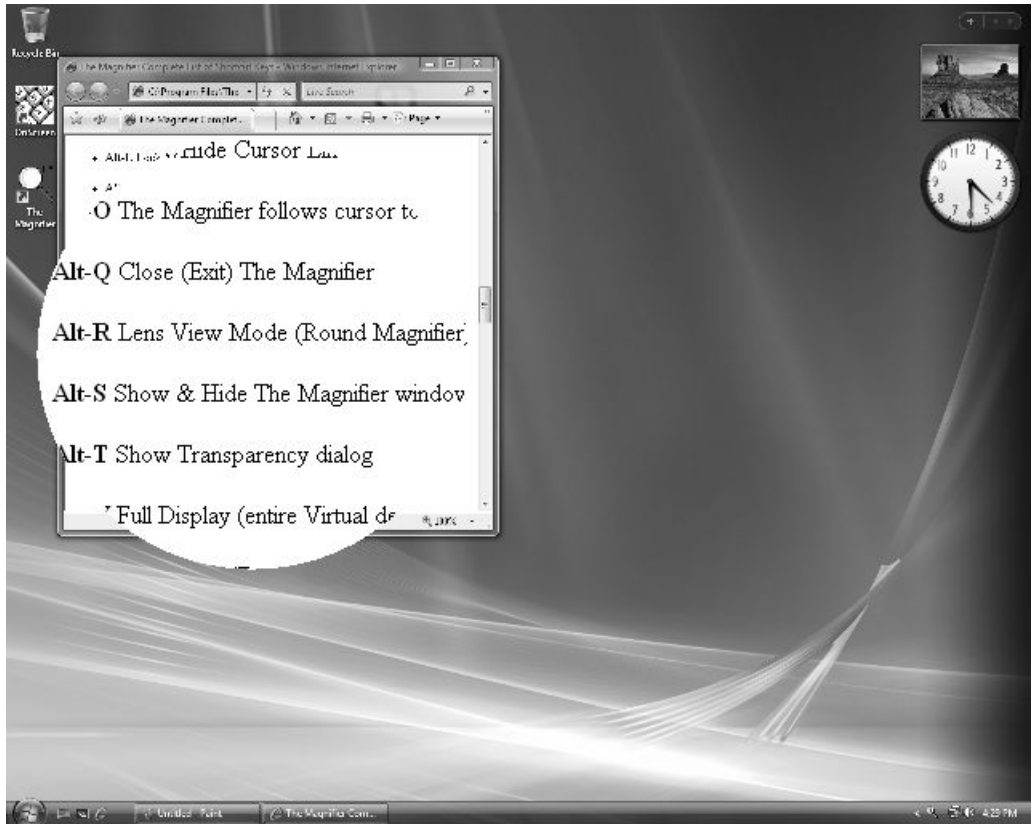


Transparency Level This option

Chapter 4. Windowed Operation

controls the visibility of The Magnifier's window. When you select this option on your menu it will bring you to a sliding bar with a window above it labeled "Enable". This window must be checked in order to change the transparency of The Magnifier's window. Keyboard Shortcut: **Alt-T**

Chapter 4. Windowed Operation



Lens View Mode This option transforms The Magnifier window into a circle (lens view). You can also toggle this mode with the keyboard shortcut **Alt-R**. The circle size is controlled by the shortest size (height or width) when going into lens view

Chapter 4. Windowed Operation

mode. When returning to normal, the window will always appear square (based on the circle size). For larger or smaller circles, you must size The Magnifier window prior to changing modes. The memory mnemonic for Alt-R is "Go to a **R**ound Lens (window)"

Presentation Mode This mode temporarily hides the actual mouse cursor so during presentations an unobstructed screen image can be shown. You can also toggle this mode with the keyboard shortcut **Alt-G**. When first enabled, you may need to move the mouse cursor to hide it. When operating in this mode, a normal mouse click will re-enable the

Chapter 4. Windowed Operation

view of the mouse cursor, or using Alt-G again. Note that this only affects the cursor OVER The Magnifier window. The memory mnemonic for Alt-G is "Go away cursor"

Always Topmost Window This option toggles whether The Magnifier window will be topmost (shown over all other windows). This option is set on and not accessible if the Magnifier over Menus is set on. When this option is clear, The Magnifier window can fall behind other windows in the system.

Magnifier Over Menus When this option is on, The Magnifier window

Chapter 4. Windowed Operation

will be shown over all menus on your computer. If this option is clear, The Magnifier window will be displayed behind menus.

Left Click & Drag The Magnifier

Set this option on so you will be able to drag your The Magnifier's window using your left-mouse button. When this option is cleared, the left button will open the menu when The Magnifier window is clicked on.

Track Text Caret When enabled, this option will track the position of the text caret, and magnify based on this position (rather than the mouse cursor). To return the magnification point to the mouse cursor, you must

Chapter 4. Windowed Operation

move your mouse. If you do not want to have the text & edit fields override the magnification point, clear this option.

Track Dialogs & Keyboard When enabled, this option reacts to dialogs being shown, and tracks keyboard focus on dialogs, menus, the desktop, and other windows. To return the magnification point to the mouse cursor, you must move your mouse.

Note: The Track Text Caret and Track Dialogs & Keyboard options uses Windows events to gather information about these types of activities. Older applications, and changes in

Chapter 4. Windowed Operation

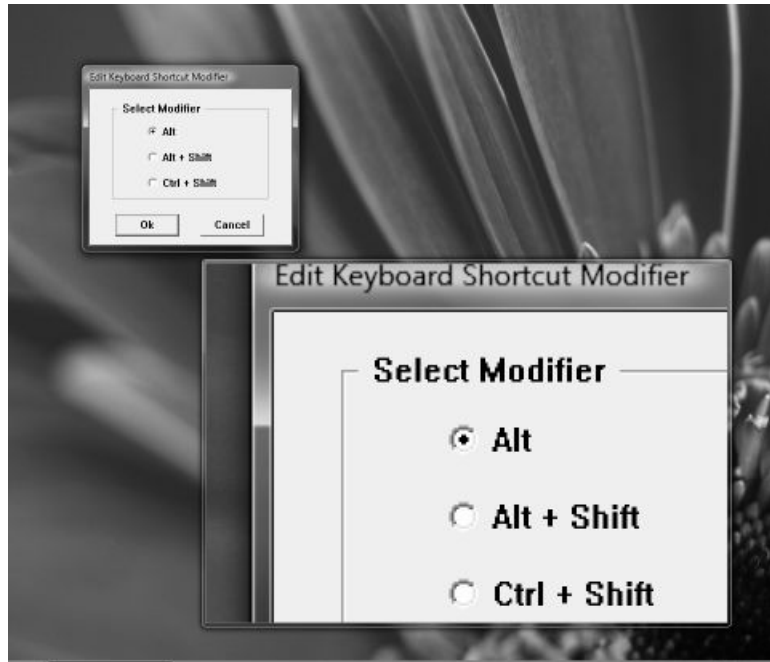
versions of Windows may affect how well these operate for you. You should make sure all updates are applied for best results. If the operation is not useful to you, then you can clear one or both of these options.

Note: You can also toggle these 2 options (Track Text Caret, and Track Dialogs & Keyboard) On and Off with the keyboard shortcut **Alt-J**. In certain cases, when typing or doing different actions, having The Magnifier track the

Chapter 4. Windowed Operation

keyboard may be problematic - this keyboard shortcut allows you to disable this tracking temporarily. Also, if the feature is off, and you start typing, you can quickly turn it back on. The memory mnemonic for Alt-J is "Stop **J**umping for the Keyboard"

Chapter 4. Windowed Operation



Keyboard Shortcuts This option will allow you to control the hot key options for The Magnifier.

Close All Other Magnifiers This option will close all but the current instance of The Magnifier with one easy click.

Close All Magnifiers This option will close The Magnifier with one easy

Chapter 4. Windowed Operation

click.

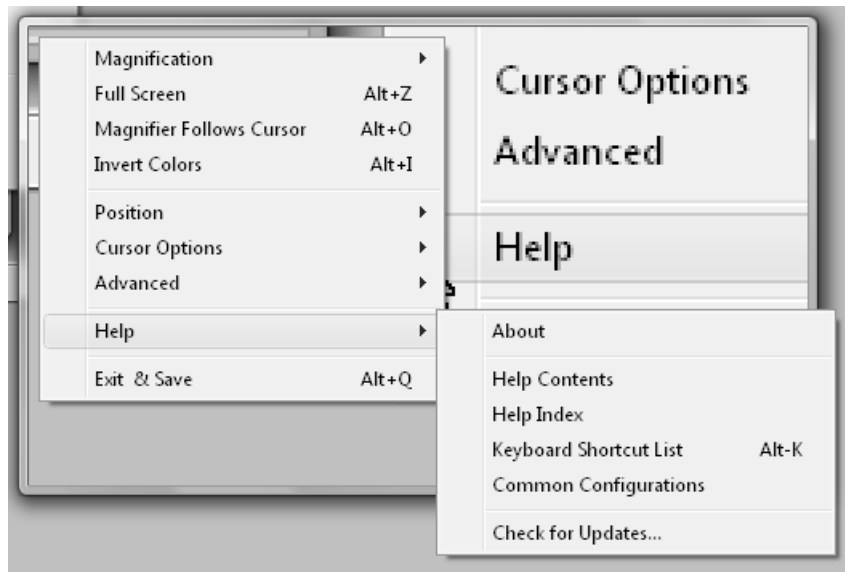
Exit & Do Not Save This option will close The Magnifier without saving the changes you have made for your preferences since the last time it has been opened.

Restart Windows This option allows you to restart windows without using the Start menu.

Exit Windows This option allows you to exit windows (Log off) without using the Start menu.

Reboot System This option will close your system (Log off) without using the Start menu.

Help



About This option opens a notification window describing the version and copyright information about The Magnifier.

Help Contents This option opens the Table of Contents for this Help document.

Chapter 4. Windowed Operation

Help Index This option opens the Index for this Help document.

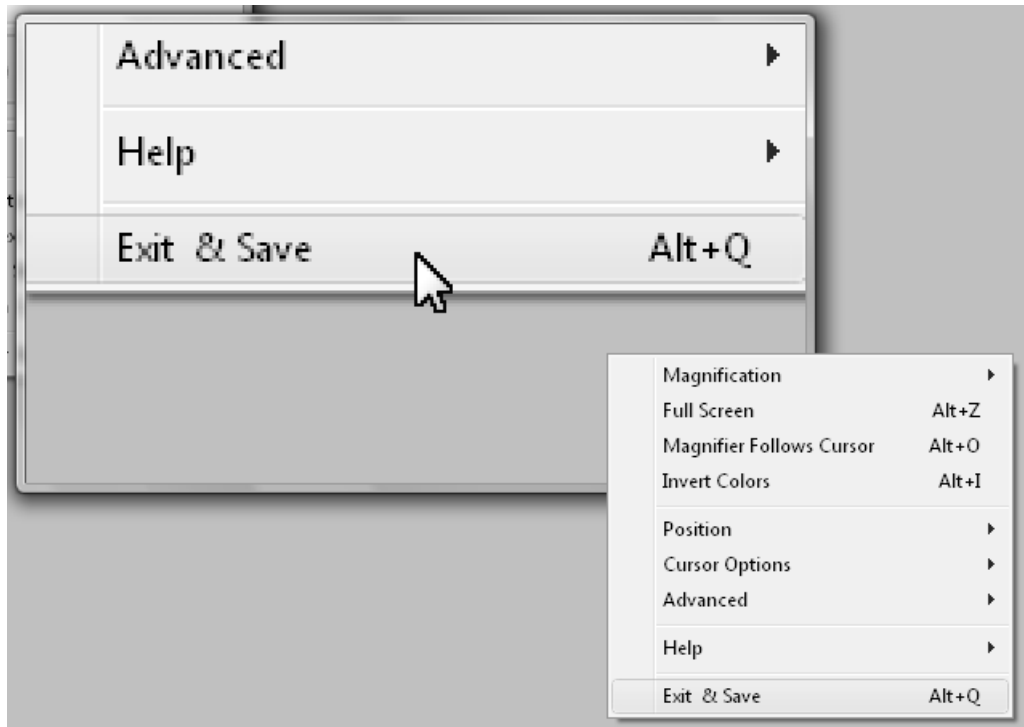
Keyboard Shortcut List This option opens the Complete List of Keyboard Shortcuts in this Help document.

Keyboard Shortcut: **Alt-K**

Common Configurations This option opens the Basic Operations and Common Configurations sections in this Help document.

Check for Updates This option checks the Internet for updates that have been provided for your copy of The Magnifier. Before selecting this option, make sure that you are using a computer with access to the Web.

Exit & Save



Exit & Save This option will allow you to exit The Magnifier and save the personal settings you have set up while using the product. Keyboard Shortcut: **Alt-Q**

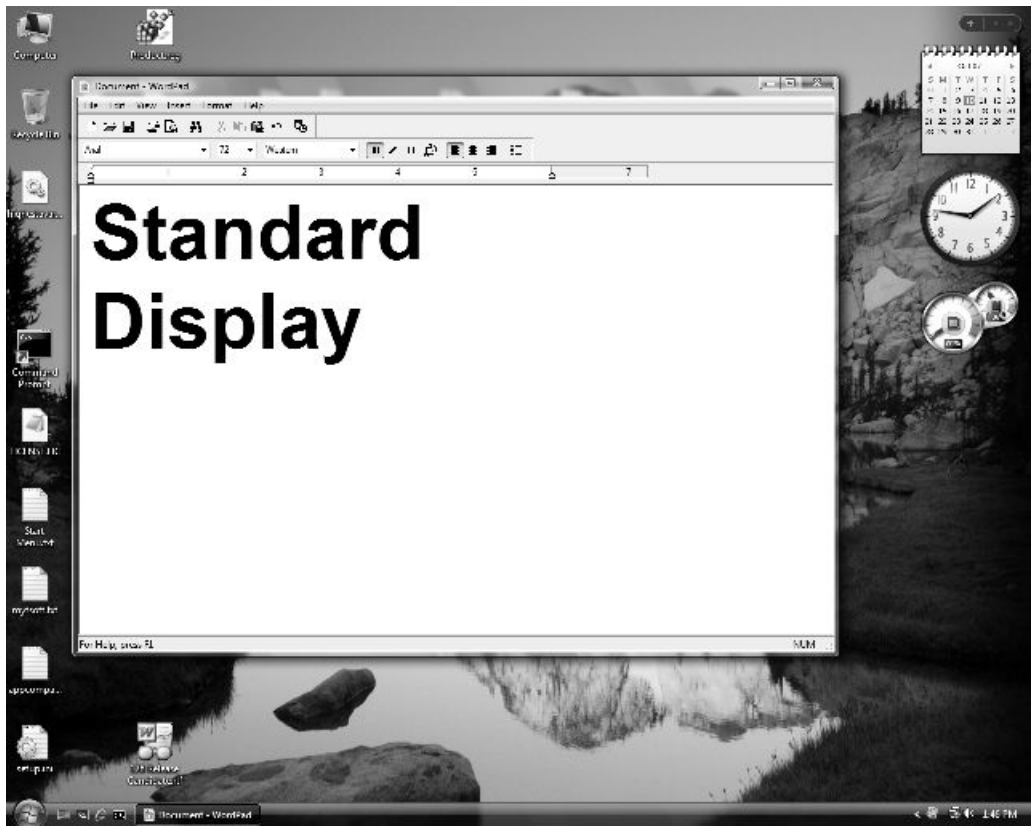
Chapter 4. Windowed Operation

Chapter 5. Full Screen Operation

The Magnifier Full Screen Operation Overview

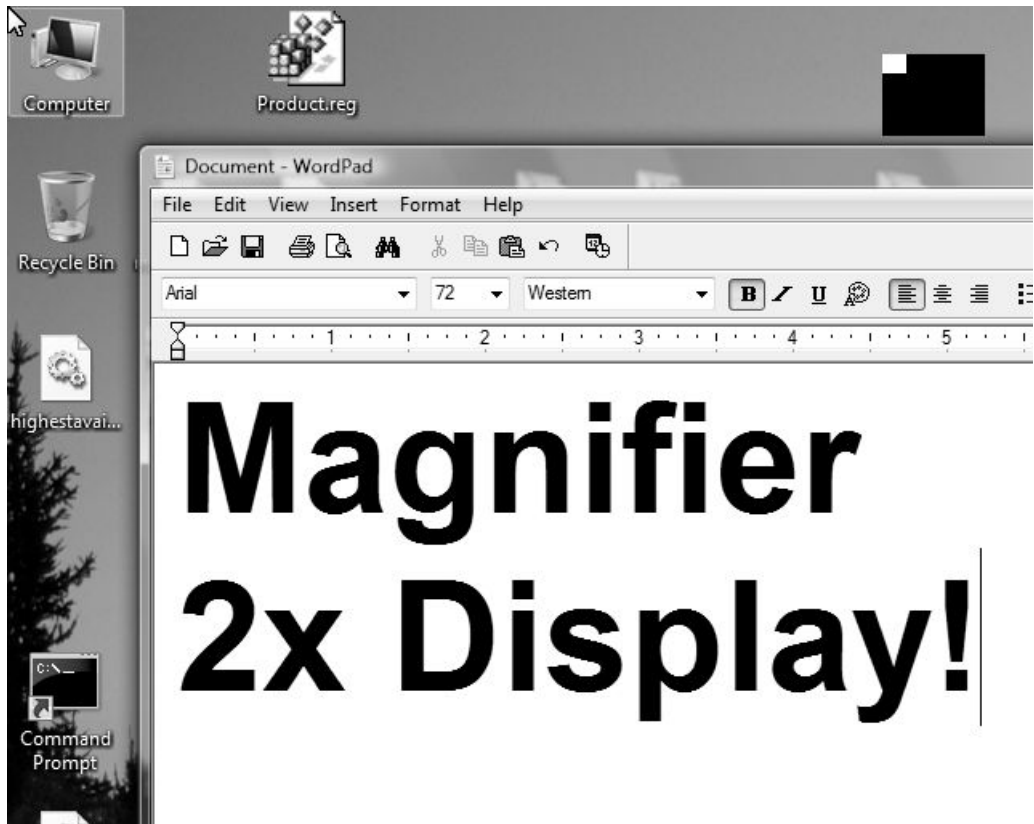
This chapter outlines the features available when running The Magnifier in the Full Screen mode.

Chapter 5. Full Screen Operation



The above image is a normal display (screen image).

Chapter 5. Full Screen Operation



The above is the same screen image, with The Magnifier running in Full Screen mode, with 2x magnification (and text changed in the document for clarity).

When running The Magnifier in Full Screen mode, a portion of the screen

Chapter 5. Full Screen Operation

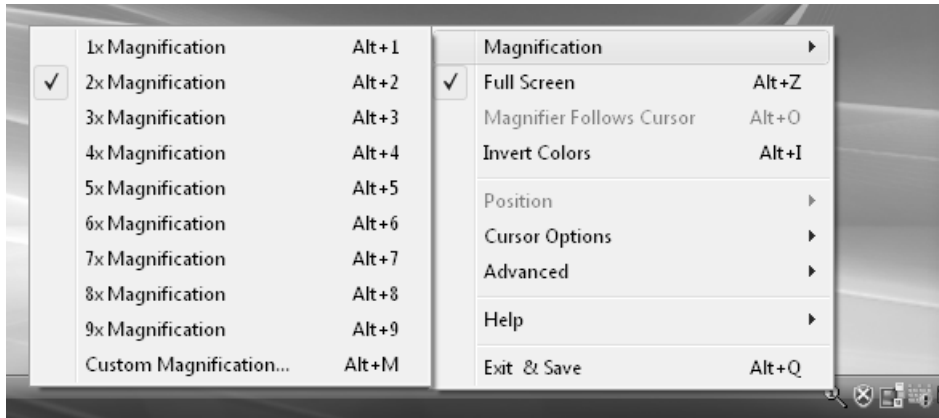
will be magnified to fill the entire display area. There is an optional reference window (default on) shown in the upper-right (which will hop out of the way if you mouse over it to the upper-left), which indicates the area of the screen being magnified. Note that as you increase your magnification, less and less of the actual display gets shown. At 2x magnification, only one-quarter of your entire display is visible in the magnified image. At 4x magnification, only one-sixteenth of your entire display is visible in the magnified image. By using the reference window, you can quickly see what area is being magnified. For some individuals, in certain cases, it

may be useful to switch to single-magnification (**Alt-1**) or hide the magnified window (**Alt-S**) to see the entire display area.

Magnification

This feature allows you to control the magnification of your screen. You can select the magnification via the menu or by using **Alt-1**, **Alt-2**, **Alt-3**, **Alt-4**, **Alt-5**, **Alt-6**, **Alt-7**, **Alt-8**, **Alt-9**, or by using **Alt-M** for the Magnification dialog.

Chapter 5. Full Screen Operation



1x Magnification This selection does not change the image on your computer screen. By making this selection you will simply be able to view the screen without any magnification (exactly as it appears). In Full Screen mode, this is effectively the same as using **Alt-S** to hide The Magnifier window.

Keyboard Shortcut: **Alt-1**

2x Magnification This selection will allow The Magnifier to show the

Chapter 5. Full Screen Operation

images on your screen twice as large as they would normally appear. **Keyboard Shortcut: Alt-2**

3x Magnification This selection will allow The Magnifier to show the image on your screen three times as large as they would normally appear. **Keyboard Shortcut: Alt-3**

4x Magnification This selection will allow The Magnifier to show the image on your screen four times as large as they would normally appear. **Keyboard Shortcut: Alt-4**

Chapter 5. Full Screen Operation



5x Magnification This selection will allow The Magnifier to show the image on your screen five times as large as they would normally appear.
Keyboard Shortcut: **Alt-5**

6x Magnification This selection will allow The Magnifier to show the

Chapter 5. Full Screen Operation

image on your screen six times as large as they would normally appear.

Keyboard Shortcut: **Alt-6**

7x Magnification This selection will allow The Magnifier to show the image on your screen seven times as large as they would normally appear.

Keyboard Shortcut: **Alt-7**

8x Magnification This selection will allow The Magnifier to show the image on your screen eight times as large as they would normally appear.

Keyboard Shortcut: **Alt-8**

9x Magnification This selection will allow The Magnifier to show the image on your screen nine times as large as they would normally appear.

Chapter 5. Full Screen Operation

Keyboard Shortcut: **Alt-9**

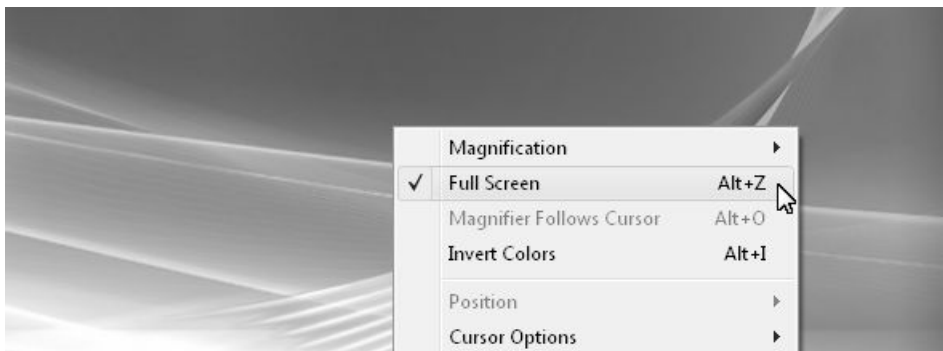


Custom Magnification This selection allows you to customize your screen magnification. The default settings on this menu will be a range of 1x-10x's the magnification of the original image, but if you wish to magnify

Chapter 5. Full Screen Operation

more, there is a dialog labeled 'Set Range' which will allow you to chose 1x-10x's, 1x-20x's, 1x-30x's, or 1x-40x's. Once you have selected the proper range, move the slider to your desired magnification settings then click to close. Keyboard Shortcut: **Alt-M**

Full Screen



Chapter 5. Full Screen Operation

Full Screen When selected in the Full Screen mode of operation, this will clear this setting, and you will go to the Windowed mode of operation.

Keyboard Shortcut: Alt-Z Refer to the previous chapter for details on running The Magnifier in the Windowed Mode of operation.

Invert Colors



This option causes the colors of the screen to become inverted which can help individuals who need high-contrast viewing. Keyboard Shortcut: **Alt-I**

Cursor Options

The options in this portion of the menu allow you to control different aspects of how The Magnifier works with the mouse cursor.



Display Cursor If this option is

Chapter 5. Full Screen Operation

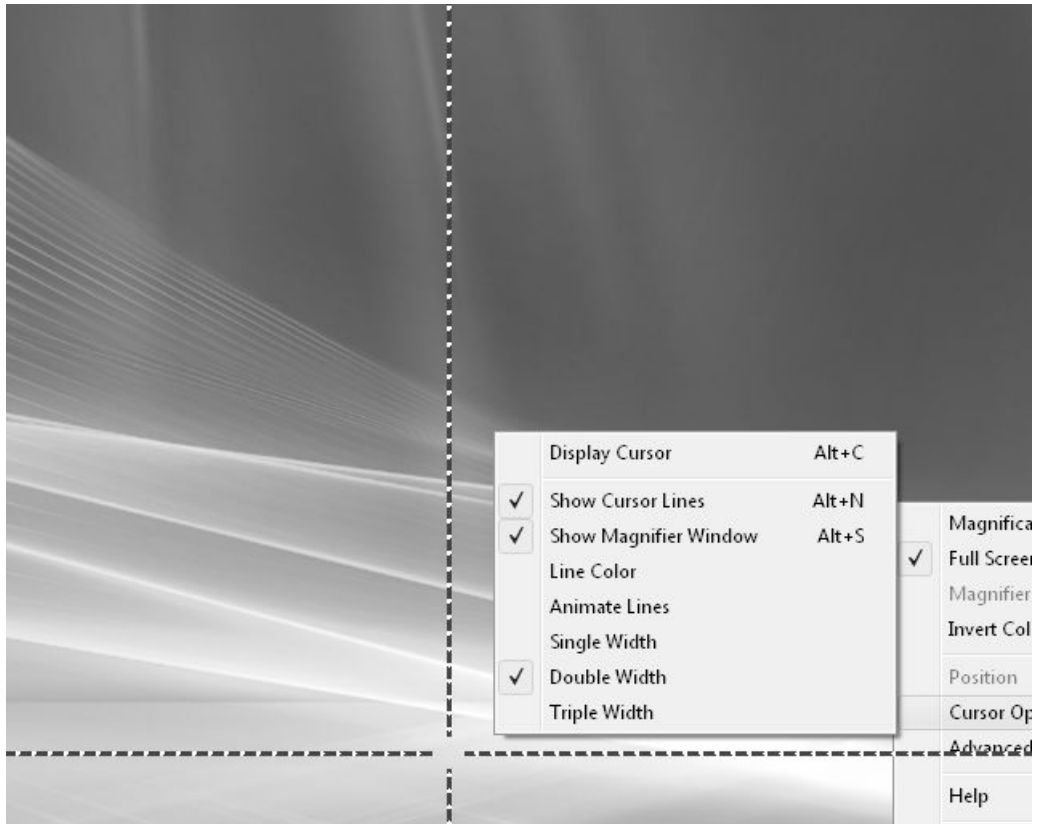
checked in your menu then a magnified mouse cursor will not be visible in The Magnifier's window, shown at the relative location of the current mouse cursor in the magnified view. When this option is clear, the mouse cursor will not be shown in The Magnifier's window. Keyboard Shortcut: **Alt-C**

IMPORTANT NOTE: When operating in the Full Screen mode, if the cursor is displayed, you will see 2 cursors - the system cursor and the magnified cursor displayed in The Magnifier. Depending on your system capabilities, there

Chapter 5. Full Screen Operation

may be a noticeable separation between the 2 cursor images at times. You can turn off the Display Cursor option in this menu, or use the **Alt-C** keyboard shortcut. You may also control the system mouse cursor display in the Mouse Properties (available from the Control Panel).

Chapter 5. Full Screen Operation



Show Cursor Lines This option causes two perpendicular lines, which intersect at your cursor, to appear on your screen. This option can be a useful tool if you are trying to locate the cursor, or have visual impairments that make it difficult to see the entire

Chapter 5. Full Screen Operation

screen. Keyboard Shortcut: **Alt-N**

FULL SCREEN NOTE: When operating in the Full Screen mode, when the Cursor Lines are visible, you have the Track Text Caret enabled, and you are typing in a document (so the text caret tracking is occurring), there will be a disconnect between the magnified image and the cursor lines. If this causes visual display problems, you can toggle the Cursor Line display during text input by using the **Alt-N** keyboard shortcut.

Chapter 5. Full Screen Operation

Show Magnifier Window When selected, this option will show The Magnifier's window, but if it is unchecked in The Magnifier's menu, the window will no longer be visible on your computer screen. You can use the **Alt-S** keyboard shortcut to toggle the visibility of The Magnifier window.

Line Color This option will allow you to change the color of the cursor lines.

Animate Lines This option animates the movement of the cursor lines, which may make it easier to find for certain individuals.

Single Width This option controls the width of your cursor lines, making

Chapter 5. Full Screen Operation

them the default - and smallest - size The Magnifier offers.

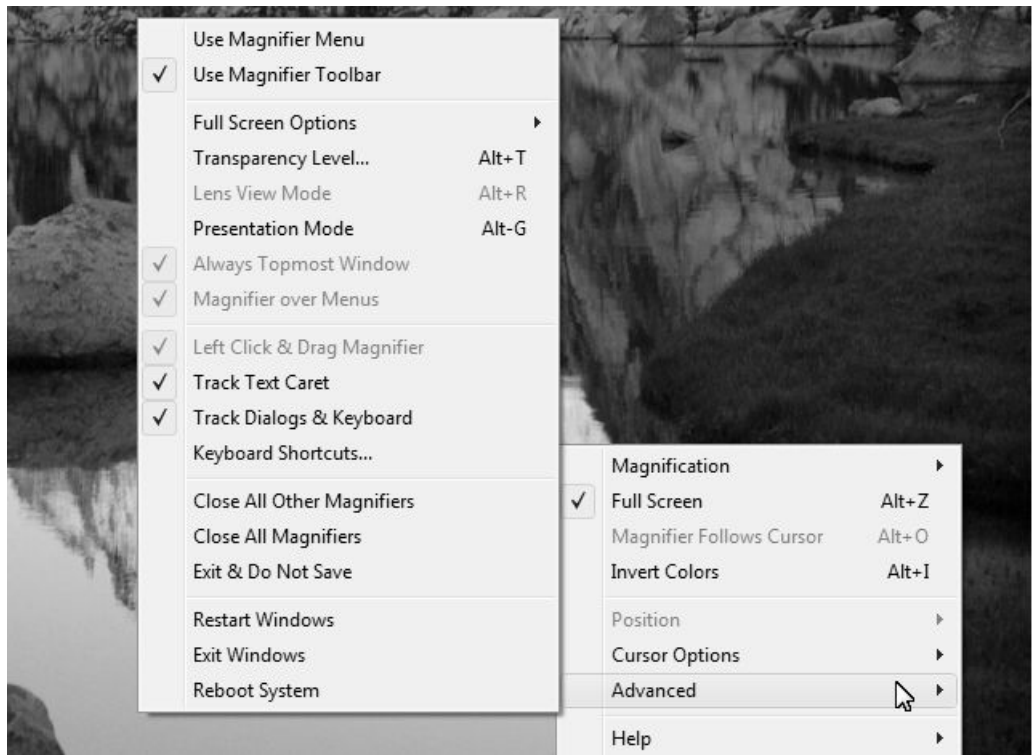
Double Width This option makes the cursor lines twice the size of the default option.

Triple Width This option makes the cursor lines three times the size of the default option.

Advanced

The Advanced Menu contains various settings & options that are more advanced or address specialized settings and features.

Chapter 5. Full Screen Operation



Use Magnifier Menu This option will allow you to use The Magnifier's window instead of a standard menu when you right-click on The Magnifier's window. This menu has large type, and fills the screen - see Magnifier Menu for more details.

Use Magnifier Toolbar This option

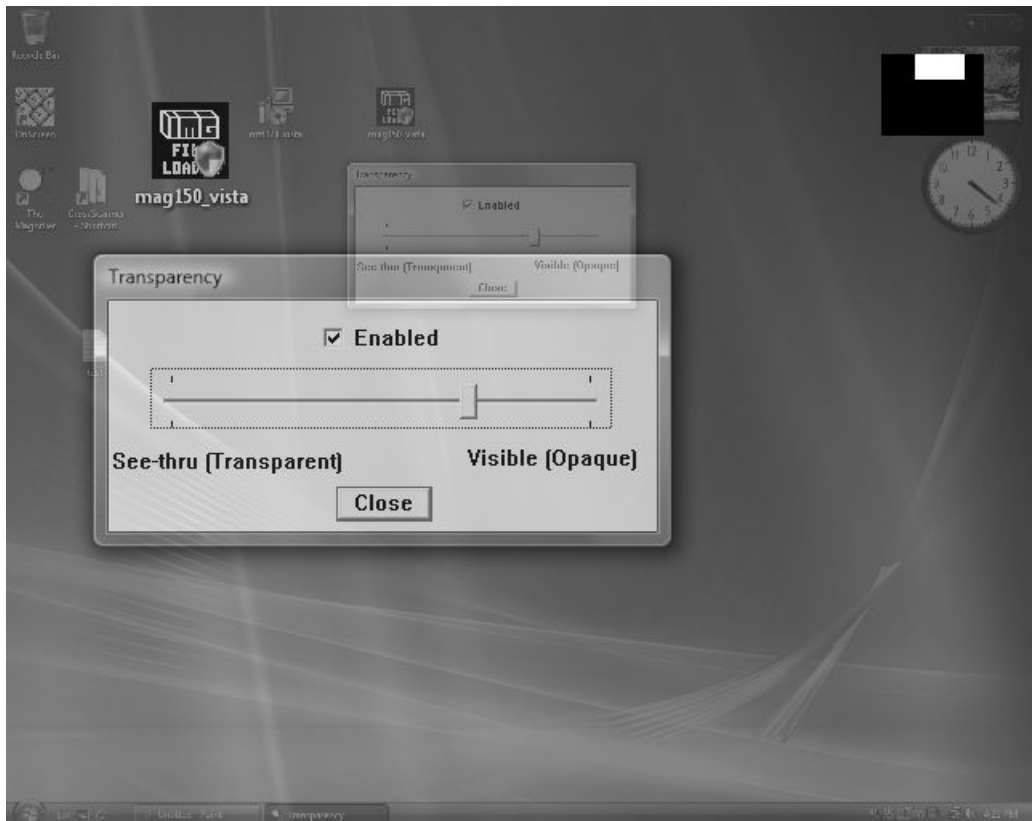
Chapter 5. Full Screen Operation

displays a separate Toolbar that can control some basic functions such as Show/Hide, Full Screen/Windowed, 2X/3X, increase or decrease magnification. This is by default On. By selecting this option, you can turn off or turn on the Toolbar. The Toolbar provides a first time user a visual tool that allows them to perform basic functions, without having to learn the keyboard shortcuts or how to access the menu. This was originally suggested for situations where The Magnifier was used in a public locations, and new/unfamiliar users would be exposed to The Magnifier without any previous knowledge on how to operate The Magnifier. There

Chapter 5. Full Screen Operation

are various options - see The Magnifier Toolbar for more details.

Full Screen Options This opens a sub menu of Full Screen Options.



Transparency Level This option controls the visibility of The Magnifier's window. When you select

Chapter 5. Full Screen Operation

this option one your menu it will bring you to a sliding bar with a window above it labeled "Enable". This window must be checked in order to to change the transparency of The Magnifier's window. Keyboard Shortcut: **Alt-T**

Lens View Mode This option is not available in Full Screen mode.

Presentation Mode This mode temporarily hides the actual mouse cursor so during presentations an unobstructed screen image can be shown. You can also toggle this mode with the keyboard shortcut **Alt-G**. When first enabled, you may need to move the mouse cursor to hide it.

Chapter 5. Full Screen Operation

When operating in this mode, a normal mouse click will re-enable the view of the mouse cursor, or by using Alt-G again. In the Full Screen mode, when this is enabled, you cannot operate as normal - however, the next mouse click will disable this mode. The memory mnemonic for Alt-G is "Go away cursor"

Always Topmost Window This option is not available in Full Screen mode.

Magnifier Over Menus This option is not available in Full Screen mode.

Left Click & Drag The Magnifier This option is not available in Full Screen mode.

Chapter 5. Full Screen Operation

Track Text Caret When enabled, this option will track the position of the text caret, and magnify based on this position (rather than the mouse cursor). To return the magnification point to the mouse cursor, you must move your mouse. If you do not want to have the text & edit fields override the magnification point, clear this option.

Track Dialogs & Keyboard When enabled, this option reacts to dialogs being shown, and tracks keyboard focus on dialogs, menus, the desktop, and other windows. To return the magnification point to the mouse cursor, you must move your mouse.

Chapter 5. Full Screen Operation

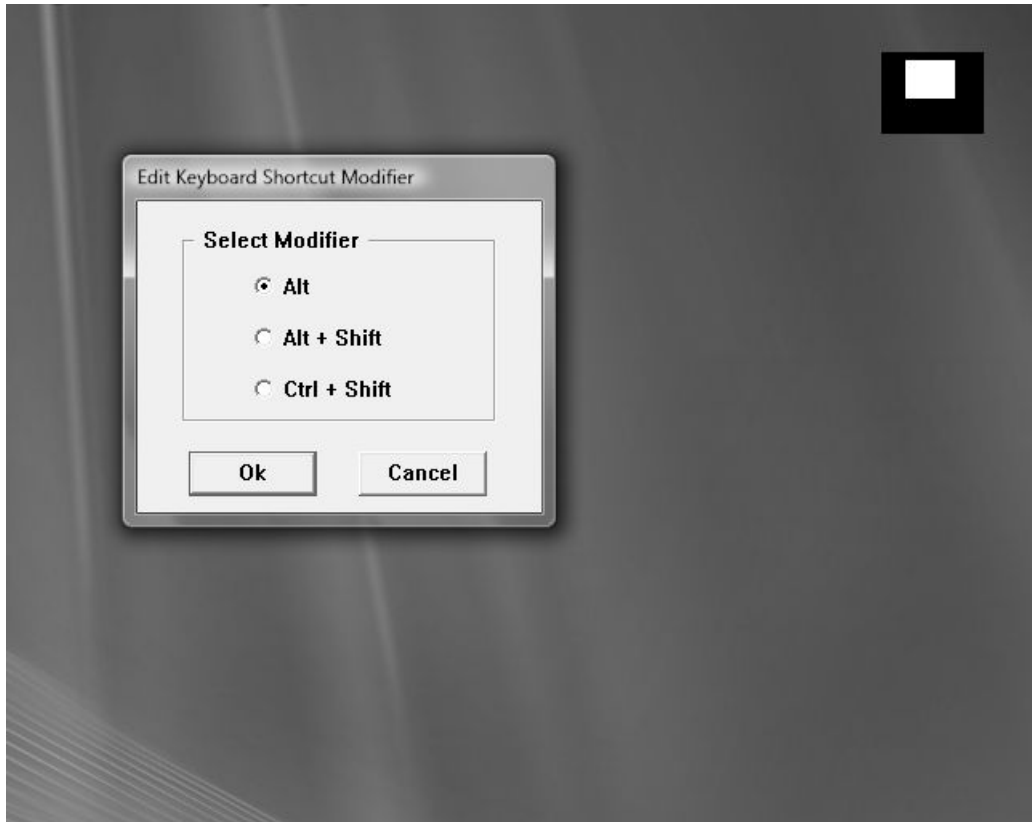
Note: The Track Text Caret and Track Dialogs & Keyboard options uses Windows events to gather information about these types of activities. Older applications, and changes in versions of Windows may affect how well these operate for you. You should make sure all updates are applied for best results. If the operation is not useful to you, then you can clear one or both of these options.

Note: You can also toggle these 2 options (Track Text

Chapter 5. Full Screen Operation

Caret, and Track Dialogs & Keyboard) On and Off with the keyboard shortcut **Alt-J**. In certain cases, when typing or doing different actions, having The Magnifier track the keyboard may be problematic - this keyboard shortcut allows you to disable this tracking temporarily. Also, if the feature is off, and you start typing, you can quickly turn it back on. The memory mnemonic for Alt-J is "Stop **J**umping for the Keyboard"

Chapter 5. Full Screen Operation



Keyboard Shortcuts This option will allow you to control the hot key options for The Magnifier.

Close All Other Magnifiers This option will close all but the current instance of The Magnifier with one easy click. In the Full Screen mode of

Chapter 5. Full Screen Operation

operation, there is only 1 instance running, so this will have no effect.

Close All Magnifiers This option will close The Magnifier with one easy click.

Exit & Do Not Save This option will close The Magnifier without saving the changes you have made for your preferences since the last time it has been opened.

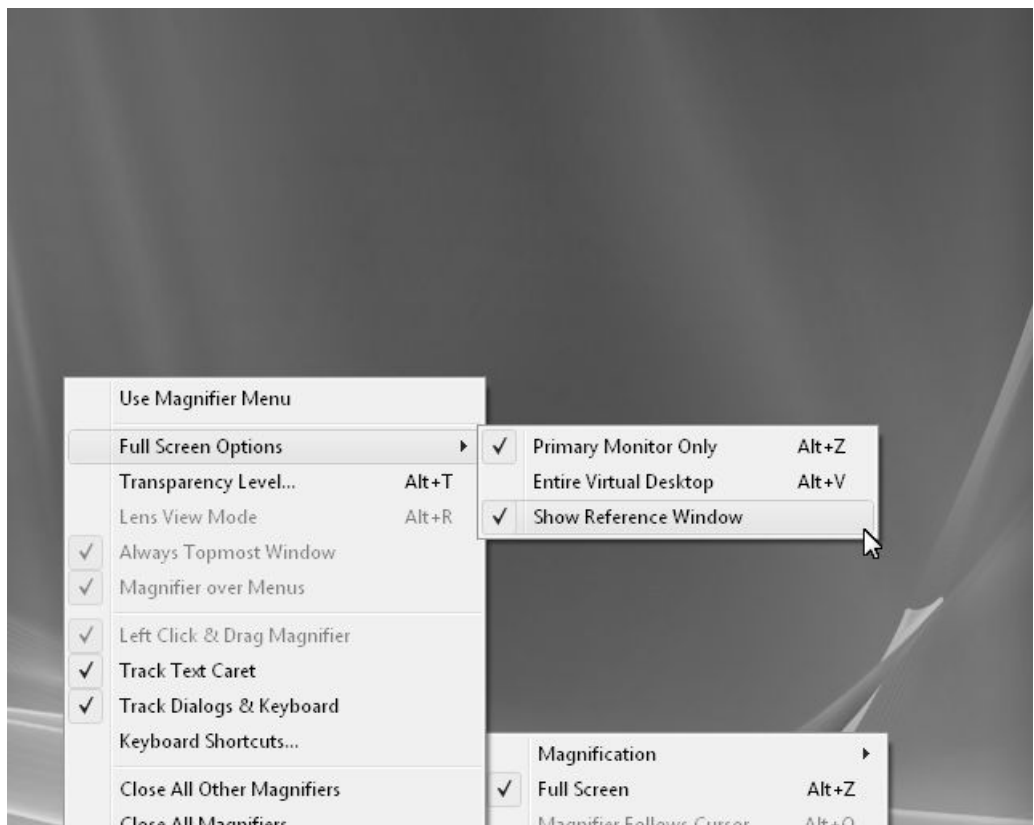
Restart Windows This option allows you to restart windows without using the Start menu.

Exit Windows This option allows you to exit windows (Log off) without using the Start menu.

Chapter 5. Full Screen Operation

Reboot System This option will close your system (Log off) without using the Start menu.

Full Screen Options



Chapter 5. Full Screen Operation

Primary Monitor Only This toggles the full screen mode of operation on the primary monitor (main display) Unless you have multiple monitors, this is the most common option.

Keyboard Shortcut: **Alt-Z**

Entire Virtual Desktop If you have multiple monitors, this option uses the entire virtual desktop space as your "Full Screen" magnifier. Keyboard Shortcut: **Alt-V**

Show Reference Window This toggles the display of the Full Screen reference window (upper-right/upper-left).

Note: The Reference window

Chapter 5. Full Screen Operation

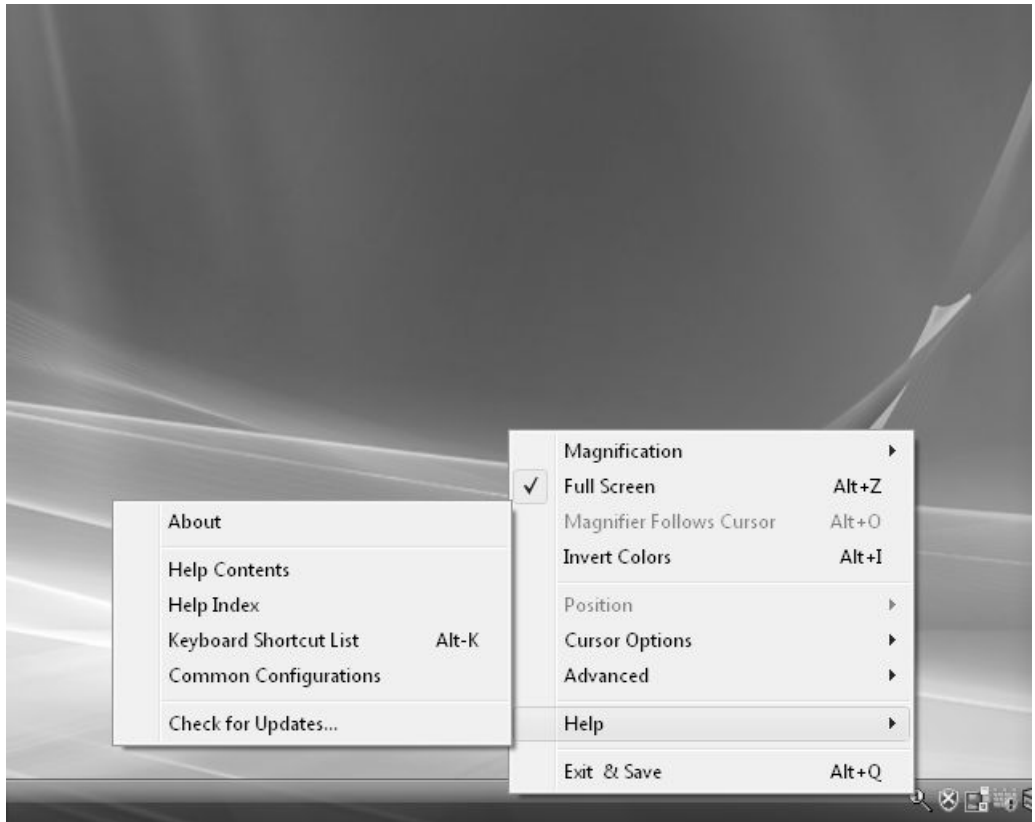
will react to the mouse cursor - if you slide the mouse cursor over the window, it will reposition to the opposite side of the display. This allows you to view underneath the window in an easy manner - just slide the mouse over the window and it will move between the upper-right and upper-left. If you do not want the window at all, select the menu option to clear the Show Reference Window.

Note: When using multiple monitors, for best results using

Chapter 5. Full Screen Operation

a sequential layout (e.g. [1][2], rather than [2][1]) will work better, especially in Windows Vista. This has to do with the system's virtual space origin - 0,0 will work better than a negative origin (refer to Windows multiple monitor desktop implementation for more details). For best results, use monitor 1 as the left-most / top-most monitor.

Help



About This option opens a notification window describing the version and copyright information about The Magnifier.

Help Contents This option opens the

Chapter 5. Full Screen Operation

Table of Contents for this Help document.

Help Index This option opens the Index for this Help document.

Keyboard Shortcut List This option opens the Complete List of Keyboard Shortcuts in this Help document.

Keyboard Shortcut: **Alt-K**

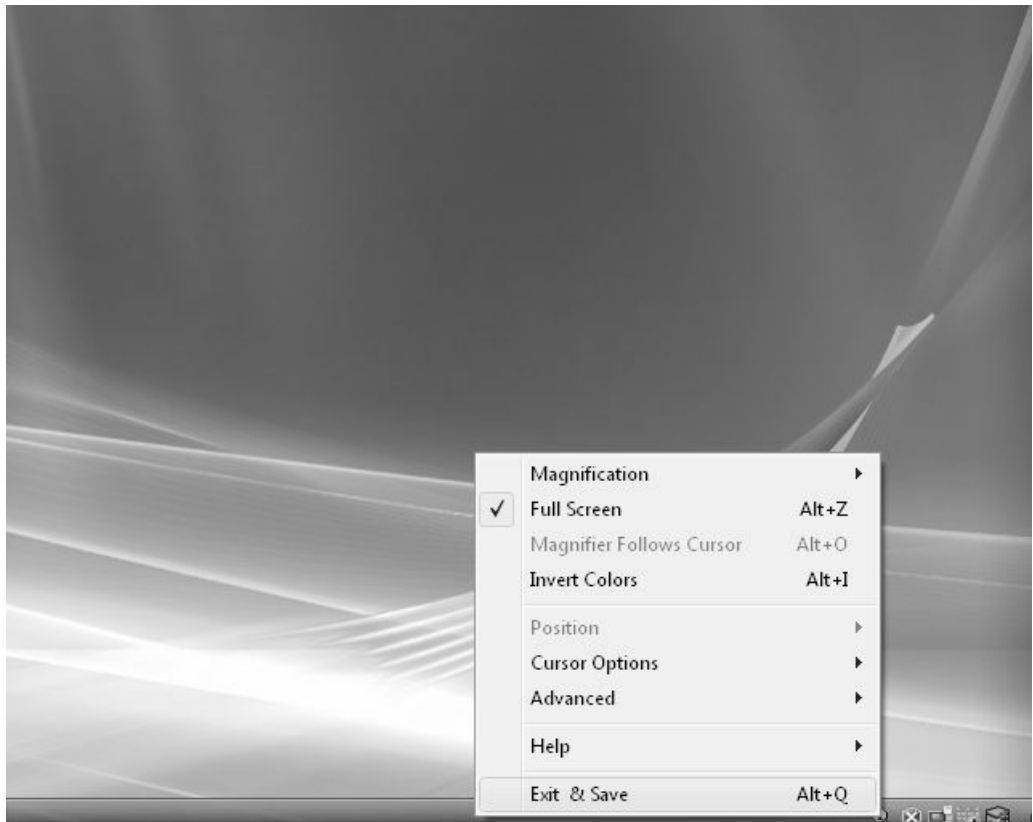
Common Configurations This option opens the Basic Operations and Common Configurations sections in this Help document.

Check for Updates This option checks the Internet for updates that have been provided for your copy of The Magnifier. Before selecting this option, make sure that you are using a

Chapter 5. Full Screen Operation

computer with access to the Web.

Exit & Save



Exit & Save This option will allow you to exit The Magnifier and save the

Chapter 5. Full Screen Operation

personal settings you have set up while using the product. Keyboard Shortcut: **Alt-Q**

Chapter 6.

Magnifier Menu

The Magnifier Menu Overview

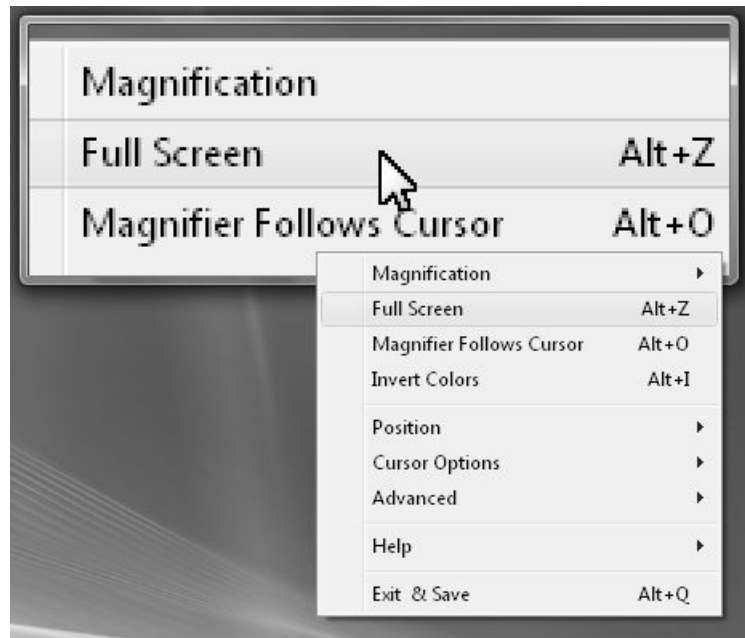
The Magnifier provides 2 menu modes. There is a special Magnifier Menu (which uses your whole screen for the menuing and uses very large text), and the standard Windows menu system. This chapter provides a reference for the full screen Magnifier Menu.

Chapter 6. Magnifier Menu

Magnification...	Position...
Full Screen	Cursor Options...
Track Cursor	Advanced...
Invert Colors	Exit & Save
Help...	• The Magnifier

The above image is the Magnifier menu.

Chapter 6. Magnifier Menu



The above image is the standard Windows menu.

Magnifier Menu -

Main Menu

Magnification...	Position...
Full Screen	Cursor Options...
Track Cursor	Advanced...
Invert Colors	Exit & Save
Help...	• The Magnifier

This chapter covers the options available from within the menuing system, using the Magnifier menu as an example of all menu options.

When selected in the Advanced

Chapter 6. Magnifier Menu

Menu, the large-type, full-screen Magnifier Menu will be displayed whenever the menu is accessed (right-clicking on the window in the windowed mode of operation, or clicking on the small icon in the tray). To return to the standard Windows menu, go into the Advanced menu again, and select "Standard Menu".

When using the Magnifier Menu, the interface is straightforward. The menu selection highlights as you move your mouse cursor over the items, and to select you left click. If you want to exit the menu, at any time click on The Magnifier area at the bottom right. On sub-menus, there will be a "Back" button which will revert to the

Chapter 6. Magnifier Menu

previous menu. There is no keyboard interface for the Magnifier menus.

Magnification... opens the Magnification Menu.

Full Screen toggles the Full Screen / Windowed modes of operation. See Windowed Operation or Full Screen Operation.

Track Cursor toggles Cursor Tracking. See Windowed Operation. Not available in Full Screen mode.

Invert Colors inverts colors in the magnified display. See Windowed Operation or Full Screen Operation.

Help... opens the Help Menu.

Position... opens the Position Menu.

Chapter 6. Magnifier Menu


Cursor Options... opens the Cursor Options Menu.

Advanced... opens the Advanced Menu.

Exit & Save exits The Magnifier and saves settings. See Windowed Operation or Full Screen Operation.

Magnifier Menu -

Magnification Menu

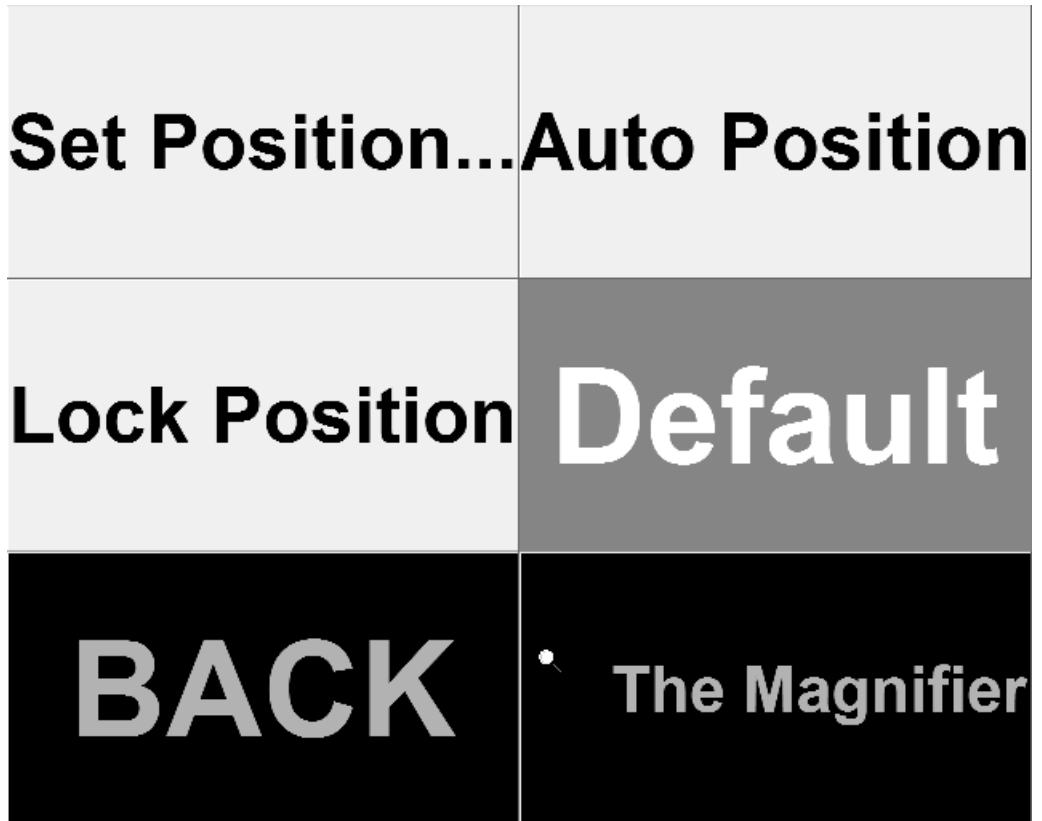
1x Magnification	6x Magnification
 2x Magnification	7x Magnification
3x Magnification	8x Magnification
4x Magnification	9x Magnification
5x Magnification	Custom
BACK	• The Magnifier

Magnification Menu The Magnification menu allows you to select various magnification factors, or open the Magnification dialog to customize the magnification level. See

Windowed Operation or Full Screen
Operation.

Magnifier Menu -

Position Menu



Note: This sub-menu is not available in the Full Screen mode of operation.


Set Position... opens the Set Position Menu.

Auto Position enables the automatic repositioning of the The Magnifier window. See Windowed Operation.

Lock Position allows you to fix the magnification point. See Windowed Operation.

Magnifier Menu - Set

Position Menu

Top-Left	Mid-Left
Mid-Right	Bottom-Right
Top-Center	Mid-Center
Bottom-Left	Split Screen H
Top-Right	Split Screen V
Bottom-Center	Default
BACK	 The Magnifier

Note: This sub-menu is not available in the Full Screen mode of operation.

Set Position Menu The Set Position Menu allows you to select various positions & return to defaults. See Windowed Operation.

Magnifier Menu - Cursor Options

Menu

✓ Display Cursor	✓ Magnifier Window
Show Cursor Lines	✓ Single Width
✓ Animate Lines	Double Width
Lines Color	Triple Width
BACK	• The Magnifier

Cursor Options Menu The Cursor Options menu allows you to select cursor lines and display options. See Windowed Operation or Full Screen Operation.

Magnifier Menu - Advanced Menu

Standard Menu	✓	Track Caret
✓ Toolbar	✓	Track Focus
Full Screen...		Shortcuts...
✓ Transparency...		Close Other Mags
Lens View		Close All Mags
Presentation		Exit & Do Not Save
✓ Always Topmost		Restart Windows
✓ Mag Over Menus		Exit Windows
✓ Drag Magnifier		Reboot System
BACK	🔍	The Magnifier

Full Screen... opens the Full Screen Options Menu.

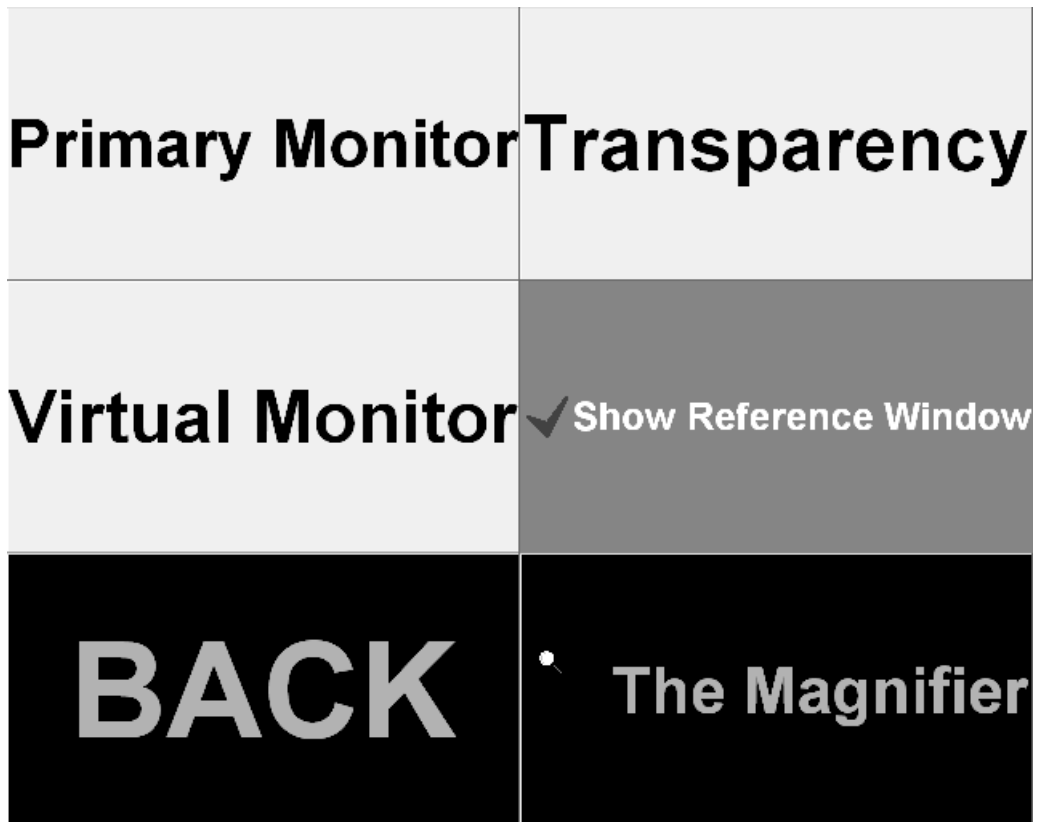
Advanced Menu The Advanced

Chapter 6. Magnifier Menu

menu allows you to select various advanced features and options. See Windowed Operation or Full Screen Operation.

Magnifier Menu - Full Screen Options

Menu



Full Screen Options Menu The Full Screen Options menu allows you to select advanced full screen features and options. See Full Screen Options.

Magnifier Menu - Help Menu

About	Help
Keys List	Index
Common Uses	Updates...
BACK	• The Magnifier

Help Menu The Help menu gives you access into this help document, shows information About this The Magnifier

Chapter 6. Magnifier Menu

release, and allows you to check for updates. See [Windowed Operation](#) or [Full Screen Operation](#).

Chapter 6. Magnifier Menu

Part III. The Magnifier Technical Documenta- tion

Advanced User Notes,

**Technical Doc-
umentation,
File
Information,
and various
Other
Information
about The**

Magnifier.

Chapter 7 - Advanced User Notes

details additional product information, Final Release Notes, Technical Notes, Advanced User Notes, Initialization File Documentation, Application Notes, Developer information, and Customer Suggestions.

Chapter 7.

Advanced User Notes

Advanced User Notes & Information

The Advanced User Notes and Technical Documentation covers a wide-range of topics & information. It is important to understand that most users will simply & quickly find the most useful way to magnify with the

Chapter 7. Advanced User Notes

software, so detailing all of the features, options, settings mixed in with the standard product help would overwhelm the majority of users.

Note: For up-to-date information, and other specific technical issues, it will always be important to refer to the on-line support database at

<http://www.imgpresents.com/imgfaq.htm>

If you have been referred to this section, or have been unable to resolve your question(s) or problems within this manual, on-line help, and tutorial, or are an advanced user

familiar with Windows Initialization files (INI type files), the Registry, and wish to learn all of The Magnifier configuration Options, please read the following chapter. For developers, integrators, or technicians, the following information should be read in its entirety - also refer to the IMG Developer's Kit for even more options & other advanced information.

Final Release Notes

Version 1.10 - Product release 1997

Version 1.20 - Product release 1998

Version 1.50 - Updates for Windows

Chapter 7. Advanced User Notes

Vista, Full Screen Magnifier options.
October 17, 2007

Version 1.50 Release 2 - maintenance
updates, help updates. March 5, 2008

Version 1.50 Release 3 - added
Toolbar, maintenance updates,
suggested features, help updates. July
16, 2009

Version 1.50 Release 4 - Windows 7
compatibility. November 24, 2009

Version 1.50 Release 5 - License
Manager updates.

Version 1.50 Release 5 - 9/17/2012

Important User Notes

The Magnifier uses built-in Windows video & window display APIs (Application Programming (Programmer) Interfaces) and does not pretend to be anything but useful utility for some users while operating within Windows.

The Magnifier attempts to provide useful magnification & other user-suggested approaches that enable users with some visual impairments to better operate & use applications within Windows. For individuals with serious visual impairments, we

Chapter 7. Advanced User Notes

strongly recommend that professional opinions be sought.

The Magnifier uses available capabilities within Windows to provide requested utilities and capabilities. In essence, The Magnifier is just a standard Windows application that provides special functionality.

Technical Notes

The Magnifier is a standard Windows Application and does not require any special drivers, and should work with all keyboard, mouse, and video drivers that are compatible with the ones that

ship with Microsoft Windows.

The Magnifier Files & File Notes & Installation Information

The Magnifier Files & File Notes

Files located in the The Magnifier
Installation Directory:

The following files are **REQUIRED**
for proper operation of

The Magnifier: (Version specific files

Chapter 7. Advanced User Notes

indicated)

* - indicates the minimum files required for functional operation of The Magnifier

- The Magnifier.EXE* - The Magnifier executable

- MagnifierXP.EXE* - The Magnifier alternate executable for Vista (Vista only)

- MAGLIB.DLL* - The Magnifier Dynamic Link Library

- IMGVERS.DLL* - IMG Dynamic Link Library

- HELP*.html,
HELP\IMAGES*.png - The Magnifier Help

Chapter 7. Advanced User Notes

- MAGNIFY.INI* - The Magnifier Initialization File
- MAGNIFY.ORG - Original The Magnifier Initialization File
- LICENSE.EXE* - IMG License Manager
- LICENSE2.EXE* - IMG License verification only (read-only access)
- LICENSE.LIC* - IMG License File
- LICENSE.ORG - Original IMG License File
- LICENSE.TXT - IMG End User License Agreement
- README.TXT - Product Installation text file

Chapter 7. Advanced User Notes

- MANIFEST.TXT - Reference File from Build
- IMGUTIL.EXE - used for installation and uninstallation of software
- UNZIP32S.DLL - Dynamic Link Library for installation and updates
- uninstall.exe - Used for un-installation link (MSI Installs)
- MANAGER\ESTABLISH.EXE - this is a post installation utility that establishes or updates the IMG Download Manager and IMG License Manager files as outlined below.

Located in \Program Files\Common Files\Innovation Management

**Group\Download Manager
directory:**

- IMGCLEAN.EXE - used to complete uninstall of software, required for Control Panel Add/Remove Programs
- IMGDLM.EXE - The IMG Download Manager - Installed by MANAGER\ESTABLISH.EXE
- IMGNET.DLL - The IMG Download Manager Library - Installed by MANAGER\ESTABLISH.EXE

Located in \Program Files\Common Files\Innovation Management Group\License Manager directory:

- LICENSE.DLL - library used by the
IMG License Manager and IMG
Download Manager

Installation Information

CD/DVD may contain:

SETUP.EXE - Installation Assistant
to determine platform / install files

AUTORUN.INF - AutoRun for
AutoPlay CD/DVD

RELEASE.TXT - Release
information

Located on the The Magnifier
Distribution media:

Chapter 7. Advanced User Notes

Compressed Files of the The
Magnifier Installation Files and:

README.TXT - For the Experienced
User

LICENSE.TXT - The Magnifier
License Agreement

SETUP.EXE - Setup Utility to Install
The Magnifier onto your Hard Drive

The IMG installer can support these
options:

/? Displays a message box with info
about options

/Q (Quiet install) runs a quiet install
(no dialogs/user interaction)

/I (Install) runs a quiet install (no
dialogs/user interaction)

Chapter 7. Advanced User Notes

/U runs a quiet un-install (no dialogs/user interaction)

/Q and /I are handled the same (customer requested /Q)

The following information is for those users who are curious and want to know, or wish to Uninstall The Magnifier & do not have the original distribution media.

There are 2 approaches to Setup, an IMG installer and the Windows Installer (MSI). The reason 2 installers are available is for flexibility and support purposes. Installing any product is a relatively easy process, but can become complicated as more & more features and capabilities are

included. In any complicated sequential process, it is inevitable that some sequence or step is not handled properly. By using a second approach, a verifiable comparison based mechanism is created where a definitive end-result of files & settings can be attained, ensuring the integrity of the installation steps.

Post Installation information:

IMGUTIL.EXE performs various post installation tasks. For reference, if the installation media has LICENSE.LIC in the same folder as SETUP.EXE, or in the \LICENSE folder, IMGUTIL will copy this into the

Chapter 7. Advanced User Notes

installation folder (this is useful for evaluation and other types of licensing). If the installation media has a DK?????.ZIP file in the same folder as SETUP.EXE, or in the \DEVKIT folder, it will be copied to the installation folder.

For reference information, you can refer to the INSTALL.XML used by the IMG SETUP.EXE for all post installation operations. In Windows Installer (MSI) installs, these same actions occur.

SETUP.EXE will sense if The

Magnifier is Installed or not. If The Magnifier is not installed, then Install must be checked to Install the The Magnifier software. If The Magnifier is already installed, you may Un-Install by selecting the Un-Install option and selecting OK throughout the following screens.

The Magnifier Initialization File Documentation

(MAGNIFY.INI)

Listed below are settings and information for specific applications that require special actions by The Magnifier, along with the Configuration settings for The Magnifier. The Brackets [] denote the area in the MAGNIFY.INI file corresponding to the instance of The Magnifier. Internally the count starts at 0, so the first instance uses the [Settings], the second [Settings1], etc.

Note: The default setting of DoNotUseRegistry=0 means The Magnifier will check the registry for the existence of the

Chapter 7. Advanced User Notes

settings. If they are there, then the registry settings are used for the current user (e.g. HKEY_CURRENT_USER \Software \Innovation Management Group \The Magnifier). If the registry settings do not exist, then the settings from MAGNIFY.INI are used as defaults, and when the user closes The Magnifier, the settings are saved to the registry. When the setting DoNotUseRegistry=1 is in use, then all settings will be saved in the MAGNIFY.INI file (location based on the ConfigPath setting). When multiple magnifiers are in use (window

mode), the sections are [Settings], [Settings1], [Settings2], etc.

IMPORTANT NOTE: The DoNotUseRegistry and ConfigPath settings are always initially read from the MAGNIFY.INI in the installation folder (location of The Magnifier.exe). Only if DoNotUseRegistry=1 will the ConfigPath be evaluated to determine where to read the user's settings from.

Note: For USB licensing, the settings are ConfigPath=0, and DoNotUseRegistry=1. This uses the location on the USB device, and not the registry (so settings are carried from system to system on the USB device).

All Settings are the default Settings of The Magnifier.

[Settings]

The following are the default settings for The Magnifier at Install.

ConfigPath=1

This setting determines where the

Chapter 7. Advanced User Notes

MAGNIFY.INI file will be located. ConfigPath=0 means the MAGNIFY.INI will be in the installation folder - there are no per user configuration files with this setting and user permissions must allow read-write access to MAGNIFY.INI, or users must run with a fixed (read-only) configuration. When ConfigPath=1 or ConfigPath=2, each user will have their own configuration files. If ConfigPath=3, these are shared among all users in a public location (this is the preferred setting if global settings for all users is desired).

Note: When

Chapter 7. Advanced User Notes

DoNotUseRegistry=0 (default),
the ConfigPath setting is not
used.

Note that the MAGNIFY.INI file in the installation folder determines the location of new users' configuration files, and if an administrator changes this after The Magnifier has already been used by other users, their existing individual configuration files will NOT be transferred to the new location. What will happen is the software will be unable to find configuration files for the current user in the current specified path, and a copy of the current configuration files

Chapter 7. Advanced User Notes

will be used as a starting point for this new location.

This is a breakdown by Operating System of the specific locations used - [User] indicates the actual user logged onto the system, and [ProductDir] indicates the Product's directory name, e.g. The Magnifier folder.

ConfigPath Locations

ConfigPath: 0

Windows 2000/XP: \Program Files
\[ProductDir]

Windows Vista: \Program Files
\[ProductDir]

ConfigPath: 1

Windows 2000/XP: C:\Documents

Chapter 7. Advanced User Notes

and Settings \[User] \Application Data
\Innovation Management Group
\[ProductDir]

Windows Vista: C:\Users \[User]
\AppData \Roaming \Innovation
Management Group \[ProductDir]

ConfigPath: 2

Windows 2000/XP: C:\Documents
and Settings \[User] \Local Settings
\Application Data \Innovation
Management Group \[ProductDir]

Windows Vista: C:\Users \[User]
\AppData \Local \Innovation
Management Group \[ProductDir]

ConfigPath: 3

Windows 2000/XP: C:\Documents
and Settings \All Users \Application

Chapter 7. Advanced User Notes

Data \Innovation Management Group
\[ProductDir]

Windows Vista: C:\ProgramData
\Innovation Management Group
\[ProductDir]

DoNotUseRegistry=0

If DoNotUseRegistry=0, then the registry is used for each user (HKEY_CURRENT_USER). The location is at

[HKEY_CURRENT_USER
\Software \Innovation Management Group \The Magnifier \Settings]. If DoNotUseRegistry=1, then the INI file is used (as specified by the ConfigPath setting).

TopMost=1

Chapter 7. Advanced User Notes

Window is Always on Top if
TopMost=1 The Magnifier is a normal
sizable popup window if TopMost=0

ForceTopmost=1

ForceTopmost is not available from
The Magnifier menu. The default is 1.
If ForceTopmost=1 then The
Magnifier will reposition itself above
every other Window every 50
milliseconds. In 1.50, this was
re-worked to sort windows in a
sensible manner. Using
AutoPosition=1 may be helpful if you
set ForceTopmost=1.

AutoPosition=0

If AutoPosition=1 then The Magnifier
will automatically reposition to the

Chapter 7. Advanced User Notes

next logical screen corner when the mouse cursor is held over The Magnifier window for several seconds. `AutoPosition=0` disables this action. Screen positions: Top-Left, Top-Right, Bottom-Left, Bottom-Right

ShowCursor=1

If `ShowCursor=1` then a cursor image will be displayed over the magnified screen area within The Magnifier window. `ShowCursor=0` disables the cursor image, and The Magnifier only displays the screen area.

OpenPositionX=0

OpenPositionY=0

Chapter 7. Advanced User Notes

OpenPositionX and OpenPositionY indicate where on screen The Magnifier should Open - X & Y indicate Top Left Corner. Default is center of screen. 0 indicates use default. Therefore, the window cannot open at position 0,0 - use -1,-1 or 1,1

OpenWidth=0

OpenHeight=0

OpenWidth and OpenHeight indicate size of window. Default window is based on the current screen resolution. 0 indicates use default. Do not use values below 10.

TimerInterval=50

The TimerInterval setting is used to

Chapter 7. Advanced User Notes

set the number of milliseconds between each Magnifier update. This can affect the system performance and should be set as slow as possible while still being useful to the user. Higher values indicate slower updates. A setting of 1000 means The Magnifier updates once every second.

MagnifierMenu=0

This indicates which menu is used. If MagnifierMenu=1 then the large button / large font Magnifier Menu is used. If MagnifierMenu=0 then the windows menu's are used, and the display settings are controlled via the Display Properties | Appearance options.

MagnificationFactor=2

This is the Magnification factor that is used within the Magnifier window to magnify from the center of either the current cursor position or the locked screen position. Valid values are 2 through 10.

AllowDrag=1

This is used to track whether the Left Click & Drag is active. If AllowDrag=1 then a Left Double Click will open the menu. If AllowDrag=0 then the drag is not available, and a single Left Click will open the menu.

LockPosition=0

Chapter 7. Advanced User Notes

If LockPosition=1 then the Magnifier no longer track the mouse cursor position, but magnifies the screen position indicated by the LockPos settings below.

LockPosX=457

LockPosY=180

These indicate the screen position X and Y that is magnified when the Magnifier is Locked on a position.

TrackCursor=0

This indicates whether the Magnifier is tracking the mouse cursor or not. If TrackCursor=1 then the Magnifier moves along with the mouse cursor, repositioning automatically as needed.

TrackPosX=101

TrackPosY=225

These are used internally for the Track Cursor Option. They should not be modified.

ShowLines=0

This setting indicates whether the Cursor Position Indicator Lines are shown. If ShowLines=1 then these 4 lines point towards the current position of the mouse cursor.

AnimateLines=1

This setting only applies if ShowLines=1. If AnimateLines=1 then the Cursor Position Indicator Lines will animate. This may assist

finding the lines.

LineWidth=1

This setting indicates the line width of the Cursor Position Indicator Lines.

Valid values are 1, 3, or 5.

NoMagWindow=0

If ShowLines=1, and

NoMagWindow=1 then ONLY the cursor lines will be shown without the Magnifier window.

LinesTopmost=1

This is an internal setting, and should remain LinesTopmost=1 This is used to keep the Cursor Position Indicator lines above other windows so they are always visible.

LayeredPct=255

This is the transparency level for the "Layered" window setting. It can range from 1-255, with 255 being opaque (NOT transparent). At lower levels, the windows become more & more transparent. Internally, if set at 255, transparency is disabled entirely.

FullScreenPrimary=0

If FullScreenPrimary=1, then the full screen operation on the primary monitor is enabled. If FullScreenPrimary=0, then the Magnifier is operating as a window.

ShowReferenceWindow=1

This only applies when operating in

Chapter 7. Advanced User Notes

full screen mode. If `ShowReferenceWindow=1`, then a reference window showing a representation of the area being magnified is shown in the upper right (or toggles to upper left if the mouse moves over the window). The white area is displayed on a black background, where the background represents the entire screen area that can be magnified, and the white area represents the area that is currently being magnified.

FullScreenVirt=0

When `FullScreenVirt=1`, then the entire virtual area (multiple monitors) is used in the full screen magnification

mode. This can only be true if the system indicates there is more than 1 monitor available and is in use.

TextCaretTracking=1

When TextCaretTracking=1, the MAGLIB.DLL enables a windows accessibility event hook and overrides the mouse cursor as the magnification point, shifting the magnification point to the text caret. When TextCaretTracking=0, this tracking is disabled.

DialogsAndFocus=1

This is similar in operation to the TextCaret tracking, but it monitors the dialog start and dialog end events, along with keyboard focus events.

Chapter 7. Advanced User Notes

DialogsAndFocus=1 means the mouse cursor location is ignored, and the magnification point is moved to the object in focus. If DialogsAndFocus=0, then this tracking is disabled. This is partially controlled by the FocusWaitTime internally (see below to override this).

;FocusWaitTime=500

This entry is an override settings for the lockout period used to prevent conflicts between the mouse operation and tracking the DialogsAndFocus events. The time is in milliseconds and 500 is the internal default. You may notice this if you start using the keyboard, then use the mouse, and go

back to the keyboard - the wait time period must elapse before the keyboard events override the mouse (and the mouse must remain stationary). You may wish to make this time shorter for a more responsive keyboard, but understand that the mouse and keyboard focus events may conflict if this delay is too short.

LensViewMode=0

When LensViewMode=1, (in window mode), a circle region is created so the Magnifier appears as a round lens.

This is not available in full screen mode. LensViewMode=0 means the window is a normal, sizable window.

InvertColors=0

Chapter 7. Advanced User Notes

InvertColors=1 means the actual screen display is inverted in the Magnifier display, and InvertColors=0 means it is normal.

AltShortcuts=1

AltShiftShortcuts=0

CtrlShiftShortcuts=0

Only 1 of these can be set to 1, the others should be at 0. These determine which keystroke combination is required to get at the Magnifier's shortcuts. By default, it is the Alt key, but this can conflict with some applications (e.g. Alt-O will open the option menu, but will also toggle the Follow cursor (track cursor) mode. If this is problematic, set

Chapter 7. Advanced User Notes

AltShiftShortcuts=1 to use the
Alt-Shift-[Key] combination, or
CtrlShiftShortcuts=1 to use
Ctrl-Shift-[Key].

rgbLines=7346

This is a decimal representation of the
colors used by the cursor lines using
the hexadecimal 0x00FFFFFF
COLORREF type internally for
0x00BBGGRR.

RangeSlider=100

This is used to track the range setting
in the Magnification dialog (10x, 20x,
30x, 40x)

MagnVista=20

This records the setting for

Chapter 7. Advanced User Notes

incremental magnification values, e.g.
the real magnification internally is this
value divided by 10, i.e.

$\text{MagnVista}/10 = \text{Magnification}.$

UseFocusEdge=1

PctFocusEdgeX=8

PctFocusEdgeY=16

If UseFocusEdge=1, then an internal calculation takes place (based on the PctFocusEdgeX and PctFocusEdgeY values) that take the current position provided by the system for the object in focus (e.g. menu item, icon, dialog control, etc.), and if it is within that percentage of the edge of the screen, then the edge of the screen is used (rather than the actual position). This

helps make things visible, especially at higher magnification values.

If UseFocusEdge=0, then the actual position is used directly, and the PctFocusEdge values mean nothing. The PctFocusEdgeX and PctFocusEdgeY values are used internally as a percentage calculation for pixels (based on the primary monitor resolution). If the position provided by the system is within the number of pixels calculated of the edge, then the edge is used. The best values depend on the monitor resolution, the magnification factor, and usage. The values chosen were based on experimentation for lower magnification factors.

UseCaretEdge=1

PctCaretEdgeX=8

PctCaretEdgeY=8

If UseCaretEdge=1, then an internal calculation takes place (based on the PctCaretEdgeX and PctCaretEdgeY values) that take the current position provided by the system for the text caret, and if it is within that percentage of the edge of the screen, then the edge of the screen is used (rather than the actual position). This helps make things visible, especially at higher magnification values.

If UseCaretEdge=0, then the actual position is used directly, and the PctCaretEdge values mean nothing.

The PctCaretEdgeX and PctCaretEdgeY values are used internally as a percentage calculation for pixels (based on the primary monitor resolution). If the position provided by the system is within the number of pixels calculated of the edge, then the edge is used. The best values depend on the monitor resolution, the magnification factor, and usage. The values chosen were based on experimentation for lower magnification factors.

Alternate Magnification In

Vista

When running in Windows Vista, Microsoft has a built in magnification interface that is used to magnify the screen display within The Magnifier, to be compatible with the entire operating system. In certain instances (lack of correct video driver, insufficient video display hardware, incorrect display settings, etc.), this interface will not operate as intended. The Magnifier's window background displays a few statements outlining important Vista information:

- Magnifying magnifier windows is not possible in Windows Vista

Chapter 7. Advanced User Notes

- If the text is seen with no magnification display at all, then the magnification interface is not currently operable. It is strongly recommended that you check settings, update drivers, upgrade your hardware, etc. to allow Vista to operate as intended.
- You can use the special keyboard shortcut **Alt-A** to access an Alternate Magnifier.

This outlines what is happening when Alt-A is used within Vista.

- The Vista compatible version of The Magnifier is closed (all instances)

Chapter 7. Advanced User Notes

- The Windows XP compatible version is started. (Named MagnifierXP.exe, location in the installation folder).

Notes: If you are forced to use the XP compatible version of The Magnifier in Windows Vista, you will want to select any other Appearance option other than the Windows Aero display (Personalize | Appearance | View Classic options). When operating with the Aero appearance selected, you are not able to view "through" The Magnifier window, and full screen operation is not usable. You

may also want to change (or create a new shortcut icon to launch MagnifierXP.exe (rather than the default The Magnifier) Otherwise, anytime you run The Magnifier.exe, you will need to use Alt-A to start the alternate program. The license remains the same, and the alternate magnifier should be effective if your system cannot use the Vista approach, and you do not run the Aero appearance setting.

Application Notes

Games using DirectX

Publisher: various

Version: many

By design, these "applications" directly access the video hardware, and bypass normal Windows video & screen display approaches. By design, The Magnifier will not work with any non-standard application software that uses these approaches. The Magnifier is designed to work with normal Windows applications that follow the rules & guidelines offered by Microsoft for operation within the normal Windows environment.

Full Screen Video

Publisher: various

Version: many

In general, similar issues to DirectX (above) also apply to full-screen video, where the display is being drawn to directly, bypassing the application software and preventing the use of The Magnifier. In some cases, the video display may be affected by The Magnifier (especially on Vista/7) (dependent on the capabilities of the video adapter in the system). You may need to hide (**Alt-S**), or close The Magnifier when viewing full-screen video.

Windows Developers

Note: In the 1.50 version, available in the IMG Developer's Kit 1.78 Release 3, there are samples of controlling and communicating with The Magnifier through stand-alone utilities, C/C++, Visual Basic, and C# (.NET). Refer to the link below to gain access to the IMG Developer's Kit.

Developers Notes, downloadable files, sample code, and other useful integration and programming information is available at Innovation

Chapter 7. Advanced User Notes

Management Group, Inc.'s Web Site:

<http://www.imgpresents.com/imgdev.htm>

Developers wishing more technical information about The Magnifier, messaging information, and details how applications can interface with The Magnifier should contact Innovation Management Group, Inc.

For Questions or other information you may contact:

Innovation Management Group, Inc.

Customer Service

179 Niblick Road #454

Paso Robles, CA 93446

USA

1-800-889-0987 (US & Canada)

+1-818-701-1579

Chapter 7. Advanced User Notes

+1-818-936-0200 (fax)

<cs@imgpresents.com>

<http://www.imgpresents.com>

About this product

The Magnifier started as a panel on IMG's My-T-Mouse[®], and by user suggestion, was spun off as a stand-alone product in 1997. An initial round of suggestions and updates resulted in the 1.20 release in 1998. Over the years, The Magnifier continued to be in demand, but there were always questions if The Magnifier could provide full-screen

magnification. When Windows Vista was released, Microsoft added a new magnification API (Application Programming (Programmer's) Interface), and it was decided that a much overdue update was necessary. Using new tools and capabilities within Windows, The Magnifier was updated utilizing all available options, and full screen magnification became possible, without having to resort to complicated driver interfaces. This design and approach results in a very cost effective implementation that is of great benefit to the majority users that have some need for a magnification utility.

Customer Suggestions

We appreciate and welcome suggestions from our users for features that you would like to see in future versions of The Magnifier. Please feel free to send us any comments you may have that would make our product more useful to you. All suggestions and ideas become the property of Innovation Management Group, Inc.

Send to:

Innovation Management Group, Inc.
Customer Service

Chapter 7. Advanced User Notes

179 Niblick Road #454
Paso Robles, CA 93446
USA

Or contact us directly:

1-800-889-0987 (US & Canada)
+1-818-701-1579
+1-818-936-0200 (fax)
<cs@imgpresents.com>
<http://www.imgpresents.com>

Date: _____

Name: _____

Address: _____

City: _____

State: _____ Zip: _____

Chapter 7. Advanced User Notes

The Magnifier Comments and
Suggestions:

Version 1.50 Release 5

9/17/2012

Copyright © 1997-2012 by
Innovation Management Group, Inc.

All Rights Reserved.

My-T-Mouse[®], My-T-Pen[®],
My-T-Touch[®] and My-T-Soft[®] are
registered trademarks of Innovation
Management Group, Inc.

Index

Symbols

2x Full Screen Operation, 181

A

About, 175, 213

About this product, 294

Add/Remove Programs, 6, 29

Advanced Menu, 161, 198

Advanced User Notes, 241

AllowDrag - INI setting, 271

Alt Keys - Shortcut Keys, 84

Index

Alt-, (comma) - decrease magnification, 94
Alt--(underscore) - decrease magnification, 94
Alt-.(period) - increase magnification, 94
Alt-1 - 1X magnification, 94
Alt-2 - 2X magnification, 94
Alt-3 - 3X magnification, 94
Alt-4 - 4X magnification, 94
Alt-5 - 5X magnification, 94
Alt-6 - 6X magnification, 94
Alt-7 - 7X magnification, 94
Alt-8 - 8X magnification, 94
Alt-9 - 9X magnification, 94
Alt-=(plus) - increase magnification, 94
Alt-A - alternate magnifier, 94
Alt-C - Show / Hide Magnified Cursor, 94
Alt-D - Return to default size, 94
Alt-Delete - Move Window Left, 98

Alt-Down Arrow - Move Cursor Down,
100

Alt-End - Move Window Right, 98

Alt-G - Presentation Mode, 94

Alt-Home - Move Window Left, 98

Alt-I - Invert Colors, 94

Alt-J - Toggle Text tracking, 94, 171, 205

Alt-K - Show list of Keyboard Shortcuts,
94

Alt-L - Lock Magnified Position, 94

Alt-Left Arrow - Move Cursor Left, 100

Alt-M - Show Magnified dialog, 94

Alt-N - Show / Hide Cursor Lines, 94

Alt-O - Follows cursor toggle, 94

Alt-PgDn - Move Window Down, 98

Alt-PgUp - Move Window Up, 98

Alt-Q - Close The Magnifier, 94

Alt-R - Lens View Mode toggle, 94

Index

Alt-Right Arrow - Move Cursor Right, 100

Alt-S - Show / Hide window, 94

Alt-T - Show Transparency dialog, 94

Alt-Up Arrow - Move Cursor Up, 100

Alt-V - Full display (Virtual display), 94

Alt-Z - Full Screen (Zoom) toggle, 94

Alternate Magnification (Vista), 286

AltShiftShortcuts - INI setting, 280

AltShortcuts - INI setting, 280

Always Topmost Window, 168

Animate (Cursor Lines), 160, 197

AnimateLines - INI setting, 273

Application Notes, 290

Arrow Keys, 98

AutoPosition - INI setting, 267

B

Basic Operation Notes - Common
Configurations, 72

C

Catalog, 61
CD (CD-ROM or DVD), 1, 24
Certificate of Authenticity, 1, 24
Check for Updates, 176, 214
Circle (Lens View), 166
Close (All/All Other), 173, 207
Color (Cursor Lines), 160, 197
Color Inversion - Common
Configurations, 120
Common Configurations, 71, 176, 214

Index

Commonly Asked Questions, 52
Complete List of Shortcut Keys, 84
ConfigPath - INI setting, 261
Contacting IMG, 292
Copyrights, 12
Ctrl-Down Arrow - Move Magnification
point Down, 102
Ctrl-Left Arrow - Move Magnification
point Left, 102
Ctrl-Right Arrow - Move Magnification
point Right, 102
Ctrl-Up Arrow - Move Magnification
point Up, 102
CtrlShiftShortcuts - INI setting, 280
Cursor Display, 156, 192
Cursor Lines, 158, 195
Cursor Lines Color, 160, 197
Cursor Options, 156, 192

Custom Magnification Setting, 138, 188

Customer Service, 59

Customer Suggestions, 296

Customer Support, 58

D

Defaults (return to) - Common

Configurations, 122

Developers, 292

Dialogs tracking, 170, 204

DialogsAndFocus - INI setting, 277

Display, 52

Display Cursor, 156, 192

DoNotUseRegistry - INI setting, 266

Down Arrow - Move bottom border down,
103

Index

Dragging, 169

Drivers, 57

DVD (CD-ROM or DVD), 1, 24

E

equipment, 23

Evaulation License, 42

Exit (No Save), 173, 207

Exit (Saving), 177, 215

Exit Windows, 174, 208

F

Features, 20

File Notes, 247

Files - Product Files Installed, 247
Final Release Notes, 243
Focus (keyboard) tracking, 170, 204
FocusWaitTime - INI setting, 278
Follows Cursor, 141
ForceTopmost - INI setting, 267
Full Screen, 140, 189
Full Screen Operation, 179
Full Screen Operation - Common
Configurations, 118
Full Screen Options, 164, 201
FullScreenPrimary - INI setting, 275
FullScreenVirt - INI setting, 276

G

Guide (Using), 12

H

hard disk space, 23
hardware requirements, 23
Help Contents, 175, 213
Hot-keys, 173, 207

I

IMG, 32, 35
Important User Information, 13
incompatibilities, 245
INI - File Documentation
(MAGNIFY.INI), 258
Initialization File Documentation
(MAGNIFY.INI), 258
Innovation Management Group, Inc., 59

input device, 245

Install

 Installing, 5, 28

 Installing / Un-Installing, 24

Install - Silent, 252

Installation Information, 252

Invert Colors, 144, 191

InvertColors - INI setting, 279

K

Keyboard Focus, 106

Keyboard focus tracking, 170, 204

Keyboard Shortcut List, 176, 214

Keyboard Shortcuts, 173, 207

Keyboard tracking, 170, 204

Keys - Shortcuts - by Function, 110

Index

Keys - Shortcuts - Common
Configurations, 84

L

LayeredPct - INI setting, 274
Left Arrow - Move left border left, 103
Left Click & Drag, 169
Lens View Mode, 166
LensViewMode - INI setting, 279
License Key, 1, 24, 35
License Manager, 35
Licensing, 35
Licensing Information, 32
Lines (cursor) Color, 160, 197
LinesTopmost - INI setting, 274
LineWidth - INI setting, 274

List of Shortcut Keys, 84

LockPosition - INI setting, 271

LockPosX - INI setting, 272

LockPosY - INI setting, 272

M

Magnification, 133, 183

MagnificationFactor - INI setting, 270

Magnifier Menu, 162, 199

Magnifier Menu - Advanced Menu, 231

Magnifier Menu - Cursor Options Menu,
230

Magnifier Menu - Full Screen Options
Menu, 233

Magnifier Menu - Help Menu, 234

Index

- Magnifier Menu - Magnification Menu, 224
- Magnifier Menu - Main Menu, 220
- Magnifier Menu - Position Menu, 226
- Magnifier Menu - Set Position Menu, 228
- Magnifier Over Menus, 168
- Magnifier Window show / hide, 158, 196
- MagnifierMenu - INI setting, 270
- MAGNIFY.INI File Documentation, 258
- MagnVista - INI setting, 281
- messaging information, 292
- Monitor, primary (Full Screen), 209
- Monitors, multiple (Full Screen), 209
- Mouse Operations, 91
- Moving, 169
- Multiple Monitors (Full Screen), 211

N

NoMagWindow - INI setting, 274

O

OpenHeight - INI setting, 269

OpenPositionX - INI setting, 268

OpenPositionY - INI setting, 268

OpenWidth - INI setting, 269

P

PctCaretEdgeX - INI setting, 283

PctCaretEdgeY - INI setting, 283

PctFocusEdgeX - INI setting, 282

Index

PctFocusEdgeY - INI setting, 282

Position Menu, 145

Presentation Mode, 167, 202

Primary Monitor (Full Screen), 209

Product Catalog, 61

Programming Information, 292

Q

Questions

Commonly Asked Questions, 52

Quick Start, 1

R

RangeSlider - INI setting, 281

Reboot Windows, 174, 208
Reference Window (Full Screen), 209
Release Information, 5, 28, 252
Release Notes, 243
requirements, 23
Restart Windows, 174, 208
rgbLines - INI setting, 281
Right Arrow - Move right border right,
103
Round (Lens View), 166

S

Serial Number, 1, 24, 35
Set Position Menu, 149
Settings section [Settings] (INI file), 261
Setup, 6

Index

Installation Options, 252

Product Installation, 252

Quiet Install, 252

Shift-Down Arrow - Move top border
down, 103

Shift-Left Arrow - Move right border left,
103

Shift-Right Arrow - Move left border
right, 103

Shift-Up Arrow - Move bottom border up,
103

Short-Cut, 20

Shortcut Keys - by Functions, 110

Shortcut Keys - Common Configurations,
84

Shortcuts (keyboard), 173, 207

Show Cursor, 156, 192

Show Magnifier Window, 158, 196

Show Reference Window (Full Screen),
209

ShowCursor - INI setting, 268

ShowLines - INI setting, 273

ShowReferenceWindow - INI setting, 275

Split Screen - Bottom, 155

Split Screen - Right, 153

standard configuration, 51

Standard Menu, 162, 199

standard settings, 51

Suggestions, 296

Support

- Customer Support, 58
- website, 58

System requirements, 23

T

Technical Documentation Section, 241

Technical Notes, 246

Text Caret tracking, 169, 203

TextCaretTracking - INI setting, 277

The Magnifier Starts with Windows -
Common Configurations, 127

The Magnifier Toolbar, 77

TimerInterval - INI setting, 269

Toolbar, 77

TopMost - INI setting, 266

Topmost Window, 168

Track Dialogs & Keyboard, 170, 204

Track Text Caret, 169, 203

TrackCursor - INI setting, 272

TrackPosX - INI setting, 272

TrackPosY - INI setting, 273

Tracks (follows) Mouse Cursor - Common Configurations, 124

Tracks Cursor, 141

Trademarks, 11

Transparency, 164, 201

Typing (magnifying), 169, 203

U

Un-Install, 30

Up Arrow - Move top border up, 103

Updates (check for), 176, 214

Use Magnifier Toolbar, 162, 199

UseCaretEdge - INI setting, 283

UseFocusEdge - INI setting, 282

User Notes, 245

Using this guide, 12

V

Version (history), 243

Video - Drivers, 57

view the cursor, 53

Virtual Desktop (Full Screen), 209

Vista - Alternate Magnification, 104, 286

W

website, 58

What is The Magnifier, 15

What You Need, 23

Why Do I Need The Magnifier?, 19

Width (Cursor Lines), 160, 197

Window (Magnifier) show / hide, 158, 196

Windowed Operation, 131

Windows Applications, 52

Windows Developers, 292

